

Datasheet for ABIN2774445
anti-MYLPF antibody (C-Term)[Go to Product page](#)

1 Image

Overview

Quantity:	100 µL
Target:	MYLPF
Binding Specificity:	C-Term
Reactivity:	Human, Mouse, Rat, Cow, Dog, Guinea Pig, Horse, Rabbit, Sheep, Goat, Zebrafish (Danio rerio)
Host:	Rabbit
Clonality:	Polyclonal
Application:	Western Blotting (WB)

Product Details

Immunogen:	The immunogen is a synthetic peptide directed towards the C-terminal region of Human MYLPF
Sequence:	LEELLTTQCD RFSQEEIKNM WAAFPPDVGG NVDYKNICYV ITHGDAKDQE
Predicted Reactivity:	Cow: 100%, Dog: 100%, Goat: 100%, Guinea Pig: 100%, Horse: 100%, Human: 100%, Mouse: 100%, Rabbit: 100%, Rat: 100%, Sheep: 100%, Zebrafish: 77%
Characteristics:	This is a rabbit polyclonal antibody against MYLPF. It was validated on Western Blot.
Purification:	Affinity Purified

Target Details

Target:	MYLPF
Alternative Name:	MYLPF (MYLPF Products)

Target Details

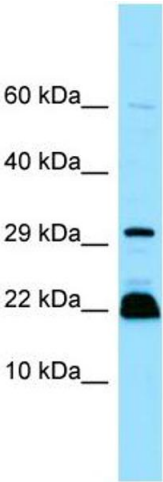
Background:	The function of this protein remains unknown. Alias Symbols: DKFZp779C0757, HUMMLC2B, MGC13450, MRLC2, MYL11 Protein Interaction Partner: EZH2, TP63, PPP2R4, PPP2CB, Protein Size: 169
Molecular Weight:	19 kDa
Gene ID:	29895
NCBI Accession:	NM_013292 , NP_037424
UniProt:	Q96A32
Pathways:	Myometrial Relaxation and Contraction

Application Details

Application Notes:	Optimal working dilutions should be determined experimentally by the investigator.
Comment:	Antigen size: 169 AA
Restrictions:	For Research Use only

Handling

Format:	Liquid
Concentration:	Lot specific
Buffer:	Liquid. Purified antibody supplied in 1x PBS buffer with 0.09 % (w/v) sodium azide and 2 % sucrose.
Preservative:	Sodium azide
Precaution of Use:	This product contains Sodium azide: a POISONOUS AND HAZARDOUS SUBSTANCE which should be handled by trained staff only.
Handling Advice:	Avoid repeated freeze-thaw cycles.
Storage:	-20 °C
Storage Comment:	For short term use, store at 2-8°C up to 1 week. For long term storage, store at -20°C in small aliquots to prevent freeze-thaw cycles.



Western Blotting

Image 1. WB Suggested Anti-MYLPF Antibody Titration:
1.0 ug/ml Positive Control: Jurkat Whole Cell