

Datasheet for ABIN2774446

**anti-SLC25A10 antibody (Middle Region)**[Go to Product page](#)**1** Image

## Overview

Quantity:	100 µL
Target:	SLC25A10
Binding Specificity:	Middle Region
Reactivity:	Human, Mouse, Rat, Cow, Dog, Guinea Pig, Horse, Rabbit, Sheep, Zebrafish (Danio rerio)
Host:	Rabbit
Clonality:	Polyclonal
Conjugate:	This SLC25A10 antibody is un-conjugated
Application:	Western Blotting (WB)

## Product Details

Immunogen:	The immunogen is a synthetic peptide directed towards the middle region of Human SLC25A10
Sequence:	PFHEKVLLGS VSGLAGGFVG TPADLVNVRM QNDVKLPQGQ RRNYAHALDG
Predicted Reactivity:	Cow: 86%, Dog: 79%, Guinea Pig: 79%, Horse: 79%, Human: 100%, Mouse: 79%, Rabbit: 79%, Rat: 79%, Sheep: 86%, Zebrafish: 86%
Characteristics:	This is a rabbit polyclonal antibody against SLC25A10. It was validated on Western Blot.
Purification:	Affinity Purified

## Target Details

Target:	SLC25A10
Alternative Name:	SLC25A10 ( <a href="#">SLC25A10 Products</a> )

## Target Details

Background:	<p>The dicarboxylate carrier catalyzes the transport of dicarboxylates such as malate and succinate across the mitochondrial membrane in exchange for phosphate, sulfate, and thiosulfate, thus supplying substrates for the Krebs cycle, gluconeogenesis, urea synthesis, and sulfur metabolism.</p> <p>Alias Symbols: DIC</p> <p>Protein Interaction Partner: MDFI, KRTAP5-9, NOTCH2NL, KRTAP10-3, KRTAP10-8, PCSK9, KRT40, KRTAP4-2, UBC, DCP2, RNF2, EZH2, BMI1, FBXO6, ADRB2, HDAC6, CLN3, ECT2, RTN4, NDUFA13, MRPS28, LARP1, ZC3H4, STX4, SOAT1, ZNF326, MRPS14, NDEL1, PAFAH1B1, TCF3, AGO4, ICT1, KRTAP4-12, RPGR, DYN</p> <p>Protein Size: 287</p>
Molecular Weight:	31 kDa
Gene ID:	1468
NCBI Accession:	<a href="#">NM_012140</a> , <a href="#">NP_036272</a>
UniProt:	<a href="#">Q9UBX3</a>
Pathways:	<a href="#">Monocarboxylic Acid Catabolic Process</a> , <a href="#">Dicarboxylic Acid Transport</a>

## Application Details

Application Notes:	Optimal working dilutions should be determined experimentally by the investigator.
Comment:	Antigen size: 287 AA
Restrictions:	For Research Use only

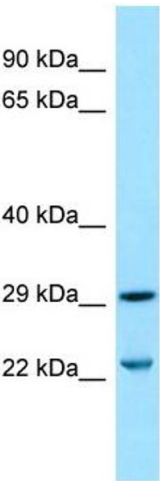
## Handling

Format:	Liquid
Concentration:	Lot specific
Buffer:	Liquid. Purified antibody supplied in 1x PBS buffer with 0.09 % (w/v) sodium azide and 2 % sucrose.
Preservative:	Sodium azide
Precaution of Use:	This product contains Sodium azide: a POISONOUS AND HAZARDOUS SUBSTANCE which should be handled by trained staff only.
Handling Advice:	Avoid repeated freeze-thaw cycles.

Handling

Storage:	-20 °C
Storage Comment:	For short term use, store at 2-8°C up to 1 week. For long term storage, store at -20°C in small aliquots to prevent freeze-thaw cycles.

Images



Western Blotting

**Image 1.** WB Suggested Anti-SLC25A10 Antibody Titration:  
1.0 ug/ml Positive Control: THP-1 Whole Cell