

Datasheet for ABIN2774448  
**anti-ESF1 antibody (C-Term)**[Go to Product page](#)

## 1 Image

## Overview

Quantity:	100 µL
Target:	ESF1
Binding Specificity:	C-Term
Reactivity:	Human, Dog, Horse, Pig, Rabbit, Rat
Host:	Rabbit
Clonality:	Polyclonal
Conjugate:	This ESF1 antibody is un-conjugated
Application:	Western Blotting (WB)

## Product Details

Immunogen:	The immunogen is a synthetic peptide directed towards the C-terminal region of Human ESF1
Sequence:	QELTQAIKKK ESEIEKESQR KSIDPALSML IKSITKTEQ FQARKKQKVK
Predicted Reactivity:	Dog: 79%, Horse: 79%, Human: 100%, Pig: 86%, Rabbit: 86%, Rat: 86%
Characteristics:	This is a rabbit polyclonal antibody against ESF1. It was validated on Western Blot.
Purification:	Affinity Purified

## Target Details

Target:	ESF1
Alternative Name:	ESF1 ( <a href="#">ESF1 Products</a> )
Background:	ESF1 may constitute a novel regulatory system for basal transcription and negatively regulates

## Target Details

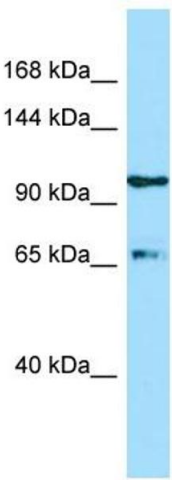
	ABT1. Alias Symbols: ABTAP, C20orf6, FLJ20368, HDCMC28P, bA526K24.1 Protein Interaction Partner: UBC, SMURF2, RNF2, SIRT7, SUMO2, ADAM19, Protein Size: 851
Molecular Weight:	99 kDa
Gene ID:	51575
NCBI Accession:	<a href="#">NM_016649</a> , <a href="#">NP_057733</a>
UniProt:	<a href="#">Q9H501</a>

## Application Details

Application Notes:	Optimal working dilutions should be determined experimentally by the investigator.
Comment:	Antigen size: 851 AA
Restrictions:	For Research Use only

## Handling

Format:	Liquid
Concentration:	Lot specific
Buffer:	Liquid. Purified antibody supplied in 1x PBS buffer with 0.09 % (w/v) sodium azide and 2 % sucrose.
Preservative:	Sodium azide
Precaution of Use:	This product contains Sodium azide: a POISONOUS AND HAZARDOUS SUBSTANCE which should be handled by trained staff only.
Handling Advice:	Avoid repeated freeze-thaw cycles.
Storage:	-20 °C
Storage Comment:	For short term use, store at 2-8°C up to 1 week. For long term storage, store at -20°C in small aliquots to prevent freeze-thaw cycles.



Western Blotting

**Image 1.** WB Suggested Anti-ESF1 Antibody Titration: 1.0 ug/ml Positive Control: MCF7 Whole Cell ESF1 is supported by BioGPS gene expression data to be expressed in MCF7