

Datasheet for ABIN2774452  
**anti-TOP1MT antibody (C-Term)**



[Go to Product page](#)

1 Image

## Overview

Quantity:	100 µL
Target:	TOP1MT
Binding Specificity:	C-Term
Reactivity:	Human, Mouse, Rat, Dog, Guinea Pig, Horse, Rabbit, Saccharomyces cerevisiae, Zebrafish (Danio rerio), Cow
Host:	Rabbit
Clonality:	Polyclonal
Conjugate:	This TOP1MT antibody is un-conjugated
Application:	Western Blotting (WB)

## Product Details

Immunogen:	The immunogen is a synthetic peptide directed towards the C-terminal region of Human TOP1MT
Sequence:	KKRRLLEKLQ EQLAQLSVQA TDKEENKQVA LGTSKLNLYLD PRISIAWCKR
Predicted Reactivity:	Cow: 85%, Dog: 85%, Guinea Pig: 92%, Horse: 86%, Human: 100%, Mouse: 100%, Rabbit: 85%, Rat: 100%, Yeast: 79%, Zebrafish: 85%
Characteristics:	This is a rabbit polyclonal antibody against TOP1MT. It was validated on Western Blot.
Purification:	Affinity Purified

## Target Details

Target:	TOP1MT
---------	--------

## Target Details

Alternative Name:	TOP1MT ( <a href="#">TOP1MT Products</a> )
Background:	<p>This gene encodes a mitochondrial DNA topoisomerase that plays a role in the modification of DNA topology. The encoded protein is a type IB topoisomerase and catalyzes the transient breaking and rejoining of DNA to relieve tension and DNA supercoiling generated in the mitochondrial genome during replication and transcription. Alternatively spliced transcript variants encoding multiple isoforms have been observed for this gene.</p> <p>Alias Symbols: -</p> <p>Protein Interaction Partner: SUMO1, FSHR, UBC,</p> <p>Protein Size: 601</p>
Molecular Weight:	70 kDa
Gene ID:	116447
NCBI Accession:	<a href="#">NM_052963</a> , <a href="#">NP_443195</a>
UniProt:	<a href="#">Q969P6</a>

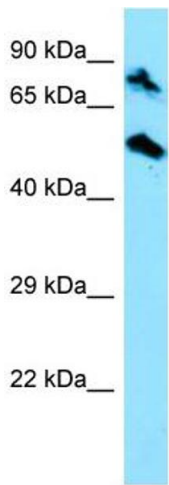
## Application Details

Application Notes:	Optimal working dilutions should be determined experimentally by the investigator.
Comment:	Antigen size: 601 AA
Restrictions:	For Research Use only

## Handling

Format:	Liquid
Concentration:	Lot specific
Buffer:	Liquid. Purified antibody supplied in 1x PBS buffer with 0.09 % (w/v) sodium azide and 2 % sucrose.
Preservative:	Sodium azide
Precaution of Use:	This product contains Sodium azide: a POISONOUS AND HAZARDOUS SUBSTANCE which should be handled by trained staff only.
Handling Advice:	Avoid repeated freeze-thaw cycles.
Storage:	-20 °C
Storage Comment:	For short term use, store at 2-8°C up to 1 week. For long term storage, store at -20°C in small

aliquots to prevent freeze-thaw cycles.



Western Blotting

**Image 1.** WB Suggested Anti-TOP1MT Antibody Titration:  
1.0 ug/ml Positive Control: HepG2 Whole Cell