

Datasheet for ABIN2774459
anti-CORO1C antibody (C-Term)



[Go to Product page](#)

1 Image

Overview

Quantity:	100 µL
Target:	CORO1C
Binding Specificity:	C-Term
Reactivity:	Human, Mouse, Rat, Cow, Dog, Horse, Pig, Rabbit, Guinea Pig
Host:	Rabbit
Clonality:	Polyclonal
Conjugate:	This CORO1C antibody is un-conjugated
Application:	Western Blotting (WB)

Product Details

Immunogen:	The immunogen is a synthetic peptide directed towards the C-terminal region of Mouse Coro1c
Sequence:	ELSCAPKKPT DTASVQNEAK LDEILKEIKS IKETICSQDE RISKLEQQLA
Predicted Reactivity:	Cow: 100%, Dog: 100%, Guinea Pig: 93%, Horse: 100%, Human: 100%, Mouse: 86%, Pig: 100%, Rabbit: 93%, Rat: 100%
Characteristics:	This is a rabbit polyclonal antibody against Coro1c. It was validated on Western Blot.
Purification:	Affinity Purified

Target Details

Target:	CORO1C
Alternative Name:	Coro1c (CORO1C Products)

Target Details

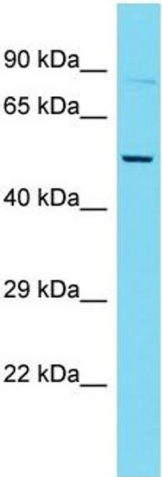
Background:	Coro1c may be involved in cytokinesis, motility, and signal transduction. Alias Symbols: AL022675, AW455561, AW548837 Protein Interaction Partner: HACE1, Eed, Foxp3, Protein Size: 474
Molecular Weight:	53 kDa
Gene ID:	23790
NCBI Accession:	NM_011779 , NP_035909
UniProt:	Q9WUM4

Application Details

Restrictions:	For Research Use only
---------------	-----------------------

Handling

Format:	Liquid
Concentration:	1 mg/mL
Buffer:	Liquid. Purified antibody supplied in 1x PBS buffer with 0.09 % (w/v) sodium azide and 2 % sucrose.
Preservative:	Sodium azide
Precaution of Use:	This product contains Sodium azide: a POISONOUS AND HAZARDOUS SUBSTANCE which should be handled by trained staff only.
Handling Advice:	Avoid repeat freeze-thaw cycles.
Storage:	-20 °C
Storage Comment:	For short term use, store at 2-8°C up to 1 week. For long term storage, store at -20°C in small aliquots to prevent freeze-thaw cycles.



Western Blotting

Image 1.