



[Go to Product page](#)

Datasheet for ABIN2774462
anti-MRPS16 antibody (C-Term)

1 Image

Overview

Quantity:	100 µL
Target:	MRPS16
Binding Specificity:	C-Term
Reactivity:	Human, Rat, Guinea Pig
Host:	Rabbit
Clonality:	Polyclonal
Conjugate:	This MRPS16 antibody is un-conjugated
Application:	Western Blotting (WB)

Product Details

Immunogen:	The immunogen is a synthetic peptide directed towards the C-terminal region of Human MRPS16
Sequence:	EKLLGLAGFF PLHPMMITNA ERLRRKRARE VLLASQKTDA EATDTEATET
Predicted Reactivity:	Guinea Pig: 75%, Human: 100%, Rat: 75%
Characteristics:	This is a rabbit polyclonal antibody against MRPS16. It was validated on Western Blot.
Purification:	Affinity Purified

Target Details

Target:	MRPS16
Alternative Name:	MRPS16 (MRPS16 Products)

Target Details

Background: Mammalian mitochondrial ribosomal proteins are encoded by nuclear genes and help in protein synthesis within the mitochondrion. Mitochondrial ribosomes (mitoribosomes) consist of a small 28S subunit and a large 39S subunit. They have an estimated 75 % protein to rRNA composition compared to prokaryotic ribosomes, where this ratio is reversed. Another difference between mammalian mitoribosomes and prokaryotic ribosomes is that the latter contain a 5S rRNA. Among different species, the proteins comprising the mitoribosome differ greatly in sequence, and sometimes in biochemical properties, which prevents easy recognition by sequence homology. This gene encodes a 28S subunit protein that belongs to the ribosomal protein S16P family. The encoded protein is one of the most highly conserved ribosomal proteins between mammalian and yeast mitochondria. Three pseudogenes (located at 8q21.3, 20q13.32, 22q12-q13.1) for this gene have been described.

Alias Symbols: CGI-132, COXPD2, FLJ22062, FLJ40972, MRP-S16, RPMS16

Protein Interaction Partner: CEP76, UBC, HNRNPU, MRPS9, MRPS26, MRPS25, MRPS2, MCAT, FAM50B, HNRNPR, HNRNPDL, SSBP1, PSMC2, PSMC1, PSMA7, PSMA5, MPV17, SLC25A5, ATXN10, CAND1, ZP3, ELAVL1, ICT1,

Protein Size: 137

Molecular Weight: 15 kDa

Gene ID: 51021

NCBI Accession: [NM_016065](#), [NP_057149](#)

UniProt: [Q9Y3D3](#)

Application Details

Application Notes: Optimal working dilutions should be determined experimentally by the investigator.

Comment: Antigen size: 137 AA

Restrictions: For Research Use only

Handling

Format: Liquid

Concentration: Lot specific

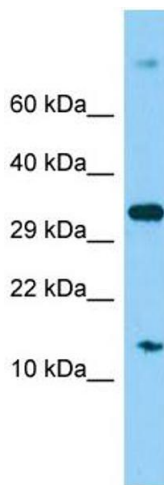
Buffer: Liquid. Purified antibody supplied in 1x PBS buffer with 0.09 % (w/v) sodium azide and 2 % sucrose.

Preservative: Sodium azide

Handling

Precaution of Use:	This product contains Sodium azide: a POISONOUS AND HAZARDOUS SUBSTANCE which should be handled by trained staff only.
Handling Advice:	Avoid repeated freeze-thaw cycles.
Storage:	-20 °C
Storage Comment:	For short term use, store at 2-8°C up to 1 week. For long term storage, store at -20°C in small aliquots to prevent freeze-thaw cycles.

Images



Western Blotting

Image 1. Host: Rabbit Target Name: MRPS16 Sample Type: 293T Whole Cell lysates Antibody Dilution: 1.0ug/ml