

Datasheet for ABIN2774469  
**anti-KIF24 antibody (N-Term)**[Go to Product page](#)

## 1 Image

## Overview

Quantity:	100 µL
Target:	KIF24
Binding Specificity:	N-Term
Reactivity:	Human, Guinea Pig, Horse, Rabbit, Rat, Cow, Dog
Host:	Rabbit
Clonality:	Polyclonal
Conjugate:	This KIF24 antibody is un-conjugated
Application:	Western Blotting (WB)

## Product Details

Immunogen:	The immunogen is a synthetic peptide directed towards the N-terminal region of Human KIF24
Sequence:	IRQNTSEKQN PWTEMEKIRV CVRKRPLGMR EVRRGEINII TVEDKETLLV
Predicted Reactivity:	Cow: 93%, Dog: 92%, Guinea Pig: 93%, Horse: 93%, Human: 100%, Rabbit: 77%, Rat: 93%
Characteristics:	This is a rabbit polyclonal antibody against KIF24. It was validated on Western Blot.
Purification:	Affinity Purified

## Target Details

Target:	KIF24
Alternative Name:	KIF24 ( <a href="#">KIF24 Products</a> )
Background:	Kinesins, such as KIF24, are microtubule-dependent ATPases that function as molecular

## Target Details

motors. They play important roles in intracellular vesicle transport and cell division.

Alias Symbols: C9orf48, FLJ10933, FLJ43884, MGC125677, MGC125678, bA571F15.4

Protein Interaction Partner: PRKAA2, UBC, Plk1, Cdk1,

Protein Size: 1368

Molecular Weight: 140 kDa

Gene ID: 347240

NCBI Accession: [NM\\_194313](#), [NP\\_919289](#)

UniProt: [Q5T7B8](#)

## Application Details

Application Notes: Optimal working dilutions should be determined experimentally by the investigator.

Comment: Antigen size: 1368 AA

Restrictions: For Research Use only

## Handling

Format: Liquid

Concentration: Lot specific

Buffer: Liquid. Purified antibody supplied in 1x PBS buffer with 0.09 % (w/v) sodium azide and 2 % sucrose.

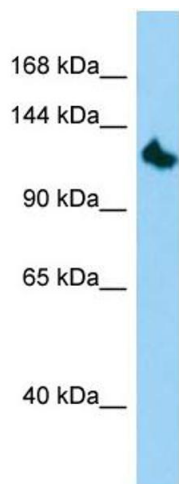
Preservative: Sodium azide

Precaution of Use: This product contains Sodium azide: a POISONOUS AND HAZARDOUS SUBSTANCE which should be handled by trained staff only.

Handling Advice: Avoid repeated freeze-thaw cycles.

Storage: -20 °C

Storage Comment: For short term use, store at 2-8°C up to 1 week. For long term storage, store at -20°C in small aliquots to prevent freeze-thaw cycles.



Western Blotting

**Image 1.** Host: Rabbit Target Name: KIF24 Sample Type: HepG2 Whole Cell lysates Antibody Dilution: 1.0ug/ml  
KIF24 is supported by BioGPS gene expression data to be expressed in HepG2