



[Go to Product page](#)

Datasheet for ABIN2774473
anti-RINL antibody (N-Term)

3 Images

Overview

Quantity:	100 µL
Target:	RINL
Binding Specificity:	N-Term
Reactivity:	Human
Host:	Rabbit
Clonality:	Polyclonal
Conjugate:	This RINL antibody is un-conjugated
Application:	Western Blotting (WB), Immunoprecipitation (IP)

Product Details

Immunogen:	The immunogen is a synthetic peptide directed towards the N-terminal region of Human RINL
Sequence:	ETHRGWGREQ TPQETEPEAA QRHDPAPRNP APHGVSQWVKG PLSPEVDHPG
Predicted Reactivity:	Human: 100%
Characteristics:	This is a rabbit polyclonal antibody against RINL. It was validated on Western Blot.
Purification:	Affinity Purified

Target Details

Target:	RINL
Alternative Name:	RINL (RINL Products)
Background:	The function of this protein remains unknown.

Target Details

Alias Symbols: FLJ44131, FLJ45909

Protein Size: 452

Molecular Weight: 50 kDa

Gene ID: 126432

NCBI Accession: [NM_198445](#), [NP_940847](#)

UniProt: [Q6ZS11](#)

Application Details

Application Notes: Optimal working dilutions should be determined experimentally by the investigator.

Comment: Antigen size: 452 AA

Restrictions: For Research Use only

Handling

Format: Liquid

Concentration: Lot specific

Buffer: Liquid. Purified antibody supplied in 1x PBS buffer with 0.09 % (w/v) sodium azide and 2 % sucrose.

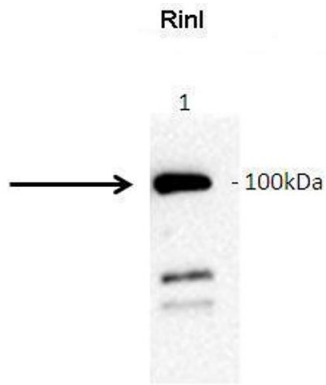
Preservative: Sodium azide

Precaution of Use: This product contains Sodium azide: a POISONOUS AND HAZARDOUS SUBSTANCE which should be handled by trained staff only.

Handling Advice: Avoid repeated freeze-thaw cycles.

Storage: -20 °C

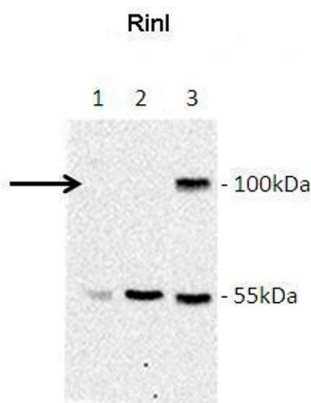
Storage Comment: For short term use, store at 2-8°C up to 1 week. For long term storage, store at -20°C in small aliquots to prevent freeze-thaw cycles.



Immunoprecipitation

Image 1. Amount and Sample Type : GFP-hRlnl transfected COS7 cell lysate Amount of IP Antibody : 10ug Primary Antibody : anti-GFP Primary Antibody Dilution : 1:1000 Secondary Antibody : Goat anti-rabbit-HRP Secondary Antibody Dilution : 1:5000 Gene Name : RINL Submitted by : Barbara Woller; Medical University of Vienna

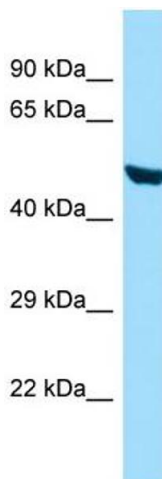
See IP 1 Data and Customer Feedback for more Information



Western Blotting

Image 2. Lanes: Lane 1: Jurkat lysate Lane 2: HeLa lysate Lane 3: GFP-Rlnl transfected COS7 lysate Primary Antibody Dilution: 1:1000 Secondary Antibody: Goat anti-rabbit-HRP Secondary Antibody Dilution: 1:5000 Gene Name: RINL Submitted by: Barbara Woller; Medical University of Vienna

See Immunoblot 2 Data and Customer Feedback for more Information



Western Blotting

Image 3. WB Suggested Anti-RINL Antibody Titration: 1.0 ug/ml Positive Control: HepG2 Whole Cell