

Datasheet for ABIN2774475
anti-THOC7 antibody (C-Term)[Go to Product page](#)

1 Image

Overview

Quantity:	100 µL
Target:	THOC7
Binding Specificity:	C-Term
Reactivity:	Human, Mouse, Rat, Cow, Rabbit, Dog, Guinea Pig, Horse, Zebrafish (Danio rerio)
Host:	Rabbit
Clonality:	Polyclonal
Conjugate:	This THOC7 antibody is un-conjugated
Application:	Western Blotting (WB)

Product Details

Immunogen:	The immunogen is a synthetic peptide directed towards the C-terminal region of Human THOC7
Sequence:	ELEHLSHIKE SVEDKLELRR KQFHVLLSTI HELQQTLEND EKLSEVEEAQ
Predicted Reactivity:	Cow: 100%, Dog: 100%, Guinea Pig: 100%, Horse: 100%, Human: 100%, Mouse: 86%, Rabbit: 100%, Rat: 100%, Zebrafish: 90%
Characteristics:	This is a rabbit polyclonal antibody against THOC7. It was validated on Western Blot.
Purification:	Affinity Purified

Target Details

Target:	THOC7
---------	-------

Target Details

Alternative Name:	THOC7 (THOC7 Products)
Background:	<p>THOC7 is a component of the THO subcomplex of the TREX complex. The TREX complex specifically associates with spliced mRNA and not with unspliced pre-mRNA. It is recruited to spliced mRNAs by a transcription-independent mechanism. Binds to mRNA upstream of the exon-junction complex (EJC) and is recruited in a splicing- and cap-dependent manner to a region near the 5' end of the mRNA where it functions in mRNA export. The recruitment occurs via an interaction between ALYREF/THOC4 and the cap-binding protein NCBP1. DDX39B functions as a bridge between ALYREF/THOC4 and the THO complex. The TREX complex is essential for the export of Kaposi's sarcoma-associated herpesvirus (KSHV) intronless mRNAs and infectious virus production. The recruitment of the TREX complex to the intronless viral mRNA occurs via an interaction between KSHV ORF57 protein and ALYREF/THOC4.</p> <p>Alias Symbols: FLJ23445, NIF3L1BP1, fSAP24</p> <p>Protein Interaction Partner: THOC2, RPA3, RPA2, RPA1, CKAP4, UBC, ZC3H15, TRMT112, PPIP5K2, THOC1, UBE3C, USP13, ZPR1, THOC5, VIM, S100A13, WDR36, ZCRB1, THOC3, ZNF606, THOC6, ALYREF, DDX39B, NIF3L1, CHD3, MED8, GOT2, MED18, MED22,</p> <p>Protein Size: 204</p>
Molecular Weight:	22 kDa
Gene ID:	80145
NCBI Accession:	NM_025075 , NP_079351
UniProt:	Q6I9Y2

Application Details

Application Notes:	Optimal working dilutions should be determined experimentally by the investigator.
Comment:	Antigen size: 204 AA
Restrictions:	For Research Use only

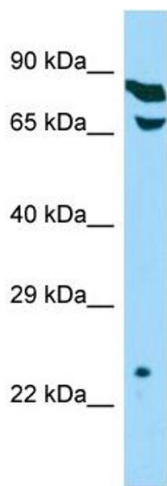
Handling

Format:	Liquid
Concentration:	Lot specific
Buffer:	Liquid. Purified antibody supplied in 1x PBS buffer with 0.09 % (w/v) sodium azide and 2 % sucrose.

Handling

Preservative:	Sodium azide
Precaution of Use:	This product contains Sodium azide: a POISONOUS AND HAZARDOUS SUBSTANCE which should be handled by trained staff only.
Handling Advice:	Avoid repeated freeze-thaw cycles.
Storage:	-20 °C
Storage Comment:	For short term use, store at 2-8°C up to 1 week. For long term storage, store at -20°C in small aliquots to prevent freeze-thaw cycles.

Images



Western Blotting

Image 1. Host: Rabbit Target Name: THOC7 Sample Type: HepG2 Whole Cell lysates Antibody Dilution: 1.0ug/ml