

Datasheet for ABIN2774479  
**anti-DEF8 antibody (N-Term)**



[Go to Product page](#)

1 Image

## Overview

Quantity:	100 µL
Target:	DEF8
Binding Specificity:	N-Term
Reactivity:	Human, Rabbit, Horse, Mouse, Rat, Cow, Dog, Guinea Pig, Zebrafish (Danio rerio)
Host:	Rabbit
Clonality:	Polyclonal
Conjugate:	This DEF8 antibody is un-conjugated
Application:	Western Blotting (WB)

## Product Details

Immunogen:	The immunogen is a synthetic peptide directed towards the N-terminal region of Human DEF8
Sequence:	PNEDEPNIRV LLEHRFYKEK SKSVKQTC DK CNTIIWGLIQ TWYTCTGCYY
Predicted Reactivity:	Cow: 100%, Dog: 100%, Guinea Pig: 100%, Horse: 93%, Human: 100%, Mouse: 100%, Rabbit: 100%, Rat: 100%, Zebrafish: 92%
Characteristics:	This is a rabbit polyclonal antibody against DEF8. It was validated on Western Blot.
Purification:	Affinity Purified

## Target Details

Target:	DEF8
Alternative Name:	DEF8 ( <a href="#">DEF8 Products</a> )

## Target Details

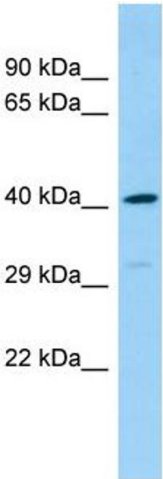
Background:	The function of this protein remains unknown. Alias Symbols: FLJ20186, MGC104349 Protein Interaction Partner: UBC, Protein Size: 391
Molecular Weight:	43 kDa
Gene ID:	54849
NCBI Accession:	<a href="#">NM_001242817</a> , <a href="#">NP_001229746</a>

## Application Details

Application Notes:	Optimal working dilutions should be determined experimentally by the investigator.
Comment:	Antigen size: 391 AA
Restrictions:	For Research Use only

## Handling

Format:	Liquid
Concentration:	Lot specific
Buffer:	Liquid. Purified antibody supplied in 1x PBS buffer with 0.09 % (w/v) sodium azide and 2 % sucrose.
Preservative:	Sodium azide
Precaution of Use:	This product contains Sodium azide: a POISONOUS AND HAZARDOUS SUBSTANCE which should be handled by trained staff only.
Handling Advice:	Avoid repeated freeze-thaw cycles.
Storage:	-20 °C
Storage Comment:	For short term use, store at 2-8°C up to 1 week. For long term storage, store at -20°C in small aliquots to prevent freeze-thaw cycles.



Western Blotting

**Image 1.** Host: Rabbit Target Name: DEF8 Sample Type: Fetal Heart lysates Antibody Dilution: 1.0ug/ml