

Datasheet for ABIN2774481
anti-H2bfm antibody (Middle Region)[Go to Product page](#)

1 Image

Overview

Quantity:	100 µL
Target:	H2bfm (H2BFM)
Binding Specificity:	Middle Region
Reactivity:	Human
Host:	Rabbit
Clonality:	Polyclonal
Conjugate:	This H2bfm antibody is un-conjugated
Application:	Western Blotting (WB)

Product Details

Immunogen:	The immunogen is a synthetic peptide directed towards the middle region of human H2BFM
Sequence:	SCYLMAAASA MAEASSETTS E EGQSIQEPKE ANSTKAQKQK RRGCRGSR
Predicted Reactivity:	Human: 100%
Characteristics:	This is a rabbit polyclonal antibody against H2BFM. It was validated on Western Blot.
Purification:	Affinity Purified

Target Details

Target:	H2bfm (H2BFM)
Alternative Name:	H2BFM (H2BFM Products)

Target Details

Background: Histones are basic nuclear proteins that are responsible for the nucleosome structure of the chromosomal fiber in eukaryotes. Two molecules of each of the four core histones (H2A, H2B, H3, and H4) form an octamer, around which approximately 146 bp of DNA is wrapped in repeating units, called nucleosomes. The linker histone, H1, interacts with linker DNA between nucleosomes and functions in the compaction of chromatin into higher order structures. This gene encodes a replication-independent histone that is a member of the H2B histone family.
Protein Size: 257

Molecular Weight: 28 kDa

Gene ID: 286436

NCBI Accession: [NM_001164416](#), [NP_001157888](#)

UniProt: [P0C1H6](#)

Application Details

Restrictions: For Research Use only

Handling

Format: Liquid

Concentration: 1 mg/mL

Buffer: Liquid. Purified antibody supplied in 1x PBS buffer with 0.09 % (w/v) sodium azide and 2 % sucrose.

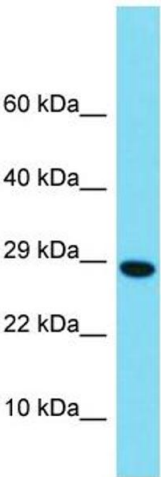
Preservative: Sodium azide

Precaution of Use: This product contains Sodium azide: a POISONOUS AND HAZARDOUS SUBSTANCE which should be handled by trained staff only.

Handling Advice: Avoid repeat freeze-thaw cycles.

Storage: -20 °C

Storage Comment: For short term use, store at 2-8°C up to 1 week. For long term storage, store at -20°C in small aliquots to prevent freeze-thaw cycles.



Western Blotting

Image 1.