



[Go to Product page](#)

Datasheet for ABIN2774493
anti-BTF3L4 antibody (C-Term)

1 Image

Overview

Quantity:	100 µL
Target:	BTF3L4
Binding Specificity:	C-Term
Reactivity:	Human, Mouse, Cow, Rat, Zebrafish (Danio rerio), Dog, Guinea Pig, Horse, Rabbit
Host:	Rabbit
Clonality:	Polyclonal
Conjugate:	This BTF3L4 antibody is un-conjugated
Application:	Western Blotting (WB)

Product Details

Immunogen:	The immunogen is a synthetic peptide directed towards the C-terminal region of Human BTF3L4
Sequence:	SLTSLRKLAE QFPRQVLDSK APKPEDIDEE DDDVPDLVEN FDEASKNEAN
Predicted Reactivity:	Cow: 100%, Dog: 100%, Guinea Pig: 100%, Horse: 100%, Human: 100%, Mouse: 100%, Rabbit: 100%, Rat: 100%, Zebrafish: 100%
Characteristics:	This is a rabbit polyclonal antibody against BTF3L4. It was validated on Western Blot.
Purification:	Affinity Purified

Target Details

Target:	BTF3L4
---------	--------

Target Details

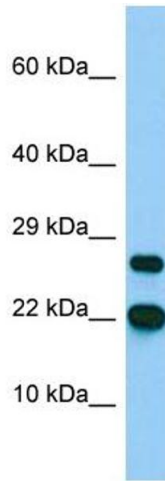
Alternative Name:	BTF3L4 (BTF3L4 Products)
Background:	The function of this protein remains unknown. Protein Interaction Partner: TXLNA, TXLNB, UBC, GOPC, HECTD1, ARIH1, NT5C2, PLIN3, ARPC1B, ARPC5, OXSR1, IST1, UBE3A, TPD52L2, HSF1, DR1, ADSL, NACA2, NACAP1, ELAVL1, Protein Size: 158
Molecular Weight:	17 kDa
Gene ID:	91408
NCBI Accession:	NM_152265 , NP_689478
UniProt:	Q96K17

Application Details

Application Notes:	Optimal working dilutions should be determined experimentally by the investigator.
Comment:	Antigen size: 158 AA
Restrictions:	For Research Use only

Handling

Format:	Liquid
Concentration:	Lot specific
Buffer:	Liquid. Purified antibody supplied in 1x PBS buffer with 0.09 % (w/v) sodium azide and 2 % sucrose.
Preservative:	Sodium azide
Precaution of Use:	This product contains Sodium azide: a POISONOUS AND HAZARDOUS SUBSTANCE which should be handled by trained staff only.
Handling Advice:	Avoid repeated freeze-thaw cycles.
Storage:	-20 °C
Storage Comment:	For short term use, store at 2-8°C up to 1 week. For long term storage, store at -20°C in small aliquots to prevent freeze-thaw cycles.



Western Blotting

Image 1. Host: Rabbit Target Name: BTF3L4 Sample Type: MCF7 Whole Cell lysates Antibody Dilution: 1.0ug/ml