



[Go to Product page](#)

Datasheet for ABIN2774498
anti-ENTHD2 antibody (N-Term)

1 Image

Overview

Quantity:	100 µL
Target:	ENTHD2
Binding Specificity:	N-Term
Reactivity:	Human, Rat, Cow, Dog, Guinea Pig, Horse, Mouse
Host:	Rabbit
Clonality:	Polyclonal
Conjugate:	This ENTHD2 antibody is un-conjugated
Application:	Western Blotting (WB)

Product Details

Immunogen:	The immunogen is a synthetic peptide directed towards the N-terminal region of Rat RGD1307410
Sequence:	LSFLHRLPIL LKGTSDDDIP CPGYLFEEIA KISHESLGSS QCLLEYLLNR
Predicted Reactivity:	Cow: 93%, Dog: 100%, Guinea Pig: 93%, Horse: 93%, Human: 100%, Mouse: 93%, Rat: 93%
Characteristics:	This is a rabbit polyclonal antibody against RGD1307410. It was validated on Western Blot.
Purification:	Affinity Purified

Target Details

Target:	ENTHD2
Alternative Name:	RGD1307410 (ENTHD2 Products)

Target Details

Background: The function of this protein remains unknown.
Alias Symbols: RGD1307410,
Protein Size: 569

Molecular Weight: 62 kDa

Gene ID: 360673

NCBI Accession: [XM_340946](#), [XP_340947](#)

UniProt: [G3V8Y7](#)

Application Details

Application Notes: Optimal working dilution should be determined by the investigator.

Restrictions: For Research Use only

Handling

Format: Liquid

Concentration: 1 mg/mL

Buffer: Liquid. Purified antibody supplied in 1x PBS buffer with 0.09 % (w/v) sodium azide and 2 % sucrose.

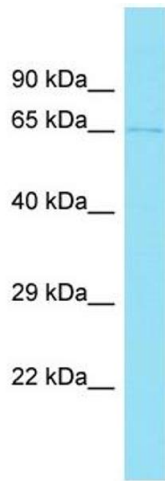
Preservative: Sodium azide

Precaution of Use: This product contains Sodium azide: a POISONOUS AND HAZARDOUS SUBSTANCE which should be handled by trained staff only.

Handling Advice: Avoid repeat freeze-thaw cycles.

Storage: -20 °C

Storage Comment: For short term use, store at 2-8°C up to 1 week. For long term storage, store at -20°C in small aliquots to prevent freeze-thaw cycles.



Western Blotting

Image 1.