

Datasheet for ABIN2774502  
**anti-EFTUD1 antibody (C-Term)**[Go to Product page](#)

## 1 Image

## Overview

Quantity:	100 µL
Target:	EFTUD1
Binding Specificity:	C-Term
Reactivity:	Human, Mouse, Rat, Horse, Rabbit, Cow, Dog, Guinea Pig, Zebrafish (Danio rerio)
Host:	Rabbit
Clonality:	Polyclonal
Conjugate:	This EFTUD1 antibody is un-conjugated
Application:	Western Blotting (WB)

## Product Details

Immunogen:	The immunogen is a synthetic peptide directed towards the C-terminal region of Human EFTUD1
Sequence:	TTEEEYLHFG EKADSENQAR KYMNAVRKRK GLYVEEKIVE HAEKQRTLK
Predicted Reactivity:	Cow: 100%, Dog: 100%, Guinea Pig: 100%, Horse: 100%, Human: 100%, Mouse: 100%, Rabbit: 100%, Rat: 100%, Zebrafish: 86%
Characteristics:	This is a rabbit polyclonal antibody against EFTUD1. It was validated on Western Blot.
Purification:	Affinity Purified

## Target Details

Target:	EFTUD1
---------	--------

## Target Details

Alternative Name:	EFTUD1 ( <a href="#">EFTUD1 Products</a> )
Background:	<p>EFTUD1 is involved in the biogenesis of the 60S ribosomal subunit and translational activation of ribosomes. Together with SBDS, EFTUD1 triggers the GTP-dependent release of EIF6 from 60S pre-ribosomes in the cytoplasm, thereby activating ribosomes for translation competence by allowing 80S ribosome assembly and facilitating EIF6 recycling to the nucleus, where it is required for 60S rRNA processing and nuclear export. EFTUD1 has low intrinsic GTPase activity. GTPase activity is increased by contact with 60S ribosome subunits.</p> <p>Alias Symbols: FAM42A, HsT19294, RIA1</p> <p>Protein Interaction Partner: TP53RK, FKBP10, RPRD1B, OSGEP, PANK4, NSUN2, UFM1, KIAA1279, ACTR2, TPD52L2, RANGAP1, LPP, BAG1, UBC,</p> <p>Protein Size: 1069</p>
Molecular Weight:	117 kDa
Gene ID:	79631
NCBI Accession:	<a href="#">NM_001040610</a> , <a href="#">NP_001035700</a>
Pathways:	<a href="#">Ribonucleoprotein Complex Subunit Organization</a> , <a href="#">Ribosome Assembly</a>

## Application Details

Application Notes:	Optimal working dilutions should be determined experimentally by the investigator.
Comment:	Antigen size: 1069 AA
Restrictions:	For Research Use only

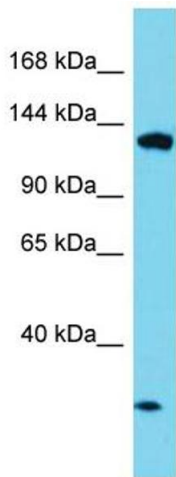
## Handling

Format:	Liquid
Concentration:	Lot specific
Buffer:	Liquid. Purified antibody supplied in 1x PBS buffer with 0.09 % (w/v) sodium azide and 2 % sucrose.
Preservative:	Sodium azide
Precaution of Use:	This product contains Sodium azide: a POISONOUS AND HAZARDOUS SUBSTANCE which should be handled by trained staff only.
Handling Advice:	Avoid repeated freeze-thaw cycles.

Handling

Storage:	-20 °C
Storage Comment:	For short term use, store at 2-8°C up to 1 week. For long term storage, store at -20°C in small aliquots to prevent freeze-thaw cycles.

Images



Western Blotting

**Image 1.** Host: Rabbit Target Name: EFTUD1 Sample Type: HepG2 Whole Cell lysates Antibody Dilution: 1.0ug/ml