

Datasheet for ABIN2774503
anti-FAM107B antibody (Middle Region)[Go to Product page](#)

1 Image

Overview

Quantity:	100 µL
Target:	FAM107B
Binding Specificity:	Middle Region
Reactivity:	Human, Mouse, Rat, Guinea Pig, Horse, Rabbit, Zebrafish (Danio rerio), Cow, Dog
Host:	Rabbit
Clonality:	Polyclonal
Conjugate:	This FAM107B antibody is un-conjugated
Application:	Western Blotting (WB)

Product Details

Immunogen:	The immunogen is a synthetic peptide directed towards the middle region of Rat Fam107b
Sequence:	PELQKVMETR RRDQVIKQKE EEAQKKKSDL EIELLKRRQK LEQLELEKQK
Predicted Reactivity:	Cow: 100%, Dog: 100%, Guinea Pig: 100%, Horse: 100%, Human: 100%, Mouse: 93%, Rabbit: 100%, Rat: 93%, Zebrafish: 87%
Characteristics:	This is a rabbit polyclonal antibody against Fam107b. It was validated on Western Blot.
Purification:	Affinity Purified

Target Details

Target:	FAM107B
Alternative Name:	Fam107b (FAM107B Products)

Target Details

Background:	The function of this protein remains unknown. Protein Size: 131
-------------	--

Molecular Weight:	14 kDa
-------------------	--------

Gene ID:	498796
----------	--------

NCBI Accession:	NM_001025034 , NP_001020205
-----------------	---

UniProt:	Q5U4F3
----------	------------------------

Application Details

Restrictions:	For Research Use only
---------------	-----------------------

Handling

Format:	Liquid
---------	--------

Concentration:	1 mg/mL
----------------	---------

Buffer:	Liquid. Purified antibody supplied in 1x PBS buffer with 0.09 % (w/v) sodium azide and 2 % sucrose.
---------	---

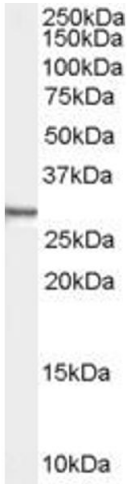
Preservative:	Sodium azide
---------------	--------------

Precaution of Use:	This product contains Sodium azide: a POISONOUS AND HAZARDOUS SUBSTANCE which should be handled by trained staff only.
--------------------	--

Handling Advice:	Avoid repeat freeze-thaw cycles.
------------------	----------------------------------

Storage:	-20 °C
----------	--------

Storage Comment:	For short term use, store at 2-8°C up to 1 week. For long term storage, store at -20°C in small aliquots to prevent freeze-thaw cycles.
------------------	---



Western Blotting

Image 1.