

Datasheet for ABIN2774509
anti-RRP15 antibody (Middle Region)[Go to Product page](#)

1 Image

Overview

Quantity:	100 µL
Target:	RRP15
Binding Specificity:	Middle Region
Reactivity:	Human, Mouse, Cow, Dog, Guinea Pig, Horse, Rabbit, Rat
Host:	Rabbit
Clonality:	Polyclonal
Conjugate:	This RRP15 antibody is un-conjugated
Application:	Western Blotting (WB)

Product Details

Immunogen:	The immunogen is a synthetic peptide directed towards the middle region of Mouse Rrp15
Sequence:	DVVKDKAER NLQRIATRGV VQLFNAVQKH QRNVGEKVKE AGGSVRKRAK
Predicted Reactivity:	Cow: 100%, Dog: 100%, Guinea Pig: 100%, Horse: 93%, Human: 100%, Mouse: 86%, Rabbit: 100%, Rat: 93%
Characteristics:	This is a rabbit polyclonal antibody against Rrp15. It was validated on Western Blot.
Purification:	Affinity Purified

Target Details

Target:	RRP15
Alternative Name:	Rrp15 (RRP15 Products)

Target Details

Background: This gene encodes a protein similar to budding yeast Rrp15p. Rrp15p is a component of pre-60S ribosomal particles in budding yeast, and is required for the early maturation steps of the 60S subunit. The mouse genome contains at least one pseudogene on the X chromosome.

Alias Symbols: 2810430M08Rik, 5430437H21Rik

Protein Interaction Partner: Eed,

Protein Size: 281

Molecular Weight: 31 kDa

Gene ID: 67223

NCBI Accession: [NM_026041](#), [NP_080317](#)

UniProt: [Q9CYX7](#)

Application Details

Application Notes: Optimal working dilution should be determined by the investigator.

Restrictions: For Research Use only

Handling

Format: Liquid

Concentration: 1 mg/mL

Buffer: Liquid. Purified antibody supplied in 1x PBS buffer with 0.09 % (w/v) sodium azide and 2 % sucrose.

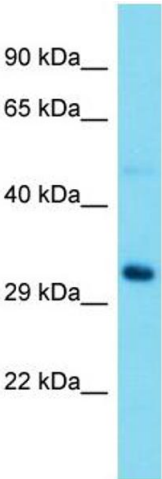
Preservative: Sodium azide

Precaution of Use: This product contains Sodium azide: a POISONOUS AND HAZARDOUS SUBSTANCE which should be handled by trained staff only.

Handling Advice: Avoid repeat freeze-thaw cycles.

Storage: -20 °C

Storage Comment: For short term use, store at 2-8°C up to 1 week. For long term storage, store at -20°C in small aliquots to prevent freeze-thaw cycles.



Western Blotting

Image 1.