

Datasheet for ABIN2774515
anti-MRPL44 antibody (C-Term)[Go to Product page](#)

1 Image

Overview

Quantity:	100 µL
Target:	MRPL44
Binding Specificity:	C-Term
Reactivity:	Human, Rat, Rabbit, Dog, Pig
Host:	Rabbit
Clonality:	Polyclonal
Conjugate:	This MRPL44 antibody is un-conjugated
Application:	Western Blotting (WB)

Product Details

Immunogen:	The immunogen is a synthetic peptide directed towards the C-terminal region of Human MRPL44
Sequence:	EGPGETVLVA EEEAARVALR KLYGFTENRR PWNYSKPKET LRAEKSITAS
Predicted Reactivity:	Dog: 85%, Human: 100%, Pig: 77%, Rabbit: 85%, Rat: 77%
Characteristics:	This is a rabbit polyclonal antibody against MRPL44. It was validated on Western Blot.
Purification:	Affinity Purified

Target Details

Target:	MRPL44
Alternative Name:	MRPL44 (MRPL44 Products)

Target Details

Background:	<p>Mammalian mitochondrial ribosomal proteins are encoded by nuclear genes and help in protein synthesis within the mitochondrion. Mitochondrial ribosomes (mitoribosomes) consist of a small 28S subunit and a large 39S subunit. They have an estimated 75 % protein to rRNA composition compared to prokaryotic ribosomes, where this ratio is reversed. Another difference between mammalian mitoribosomes and prokaryotic ribosomes is that the latter contain a 5S rRNA. Among different species, the proteins comprising the mitoribosome differ greatly in sequence, and sometimes in biochemical properties, which prevents easy recognition by sequence homology. This gene encodes a 39S subunit protein.</p> <p>Alias Symbols: L44MT, MRP-L44</p> <p>Protein Interaction Partner: ABI2, TARDBP, NPM1, PPAP2C, DGKE, C1QBP, MPV17, ILF3, HNRNPU, ATP6V0A1, TMEM177, MRPL24, MRPL9, MRPL32, MRPL38, MRPL41, MRPL47, TSR1, SYNJ2BP, MRPL50, MRPL39, MRPL51, MRPL37, MRPL13, MRPL42, MRPL19, SPCS2, EIF4H, CUL3, TCF3, UBC, ITFG1, CEP70, SEMA5B, NGE</p> <p>Protein Size: 332</p>
-------------	--------------------------------------------------------------------------------------------------------------------------------------------------------------------------------------------------------------------------------------------------------------------------------------------------------------------------------------------------------------------------------------------------------------------------------------------------------------------------------------------------------------------------------------------------------------------------------------------------------------------------------------------------------------------------------------------------------------------------------------------------------------------------------------------------------------------------------------------------------------------------------------------------------------------------------------------------------------------------------------------------------------------------------------------------------------------------------------------

Molecular Weight:	37 kDa
-------------------	--------

Gene ID:	65080
----------	-------

NCBI Accession:	NM_022915 , NP_075066
-----------------	-------------------------------------------------------

UniProt:	Q9H9J2
----------	------------------------

Application Details

Application Notes:	Optimal working dilutions should be determined experimentally by the investigator.
--------------------	------------------------------------------------------------------------------------

Comment:	Antigen size: 332 AA
----------	----------------------

Restrictions:	For Research Use only
---------------	-----------------------

Handling

Format:	Liquid
---------	--------

Concentration:	Lot specific
----------------	--------------

Buffer:	Liquid. Purified antibody supplied in 1x PBS buffer with 0.09 % (w/v) sodium azide and 2 % sucrose.
---------	-----------------------------------------------------------------------------------------------------

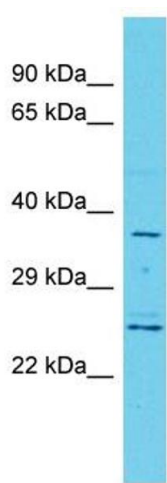
Preservative:	Sodium azide
---------------	--------------

Precaution of Use:	This product contains Sodium azide: a POISONOUS AND HAZARDOUS SUBSTANCE which
--------------------	-------------------------------------------------------------------------------

Handling

	should be handled by trained staff only.
Handling Advice:	Avoid repeated freeze-thaw cycles.
Storage:	-20 °C
Storage Comment:	For short term use, store at 2-8°C up to 1 week. For long term storage, store at -20°C in small aliquots to prevent freeze-thaw cycles.

Images



Western Blotting

Image 1. Host: Rabbit Target Name: MRPL44 Sample Type: Hela Whole Cell lysates Antibody Dilution: 1.0ug/ml