

Datasheet for ABIN2774516
anti-CCNJL antibody (C-Term)



[Go to Product page](#)

1 Image

Overview

Quantity:	100 µL
Target:	CCNJL
Binding Specificity:	C-Term
Reactivity:	Human, Mouse, Cow, Horse, Rat
Host:	Rabbit
Clonality:	Polyclonal
Conjugate:	This CCNJL antibody is un-conjugated
Application:	Western Blotting (WB)

Product Details

Immunogen:	The immunogen is a synthetic peptide directed towards the C-terminal region of Human CCNJL
Sequence:	GQPATTLAQF QTPVQDLCLA YRDSLQAHRS GSLLSGSTGS SLHTPYQPLQ
Predicted Reactivity:	Cow: 79%, Horse: 86%, Human: 100%, Mouse: 79%, Rat: 79%
Characteristics:	This is a rabbit polyclonal antibody against CCNJL. It was validated on Western Blot.
Purification:	Affinity Purified

Target Details

Target:	CCNJL
Alternative Name:	CCNJL (CCNJL Products)
Background:	The function of this protein remains unknown.

Target Details

Alias Symbols: -

Protein Interaction Partner: KRTAP26-1, KRTAP10-8, C1orf94, TRAF2, REL, AES,

Protein Size: 365

Molecular Weight: 40 kDa

Gene ID: 79616

NCBI Accession: [NM_024565](#), [NP_078841](#)

Application Details

Application Notes: Optimal working dilutions should be determined experimentally by the investigator.

Comment: Antigen size: 365 AA

Restrictions: For Research Use only

Handling

Format: Liquid

Concentration: Lot specific

Buffer: Liquid. Purified antibody supplied in 1x PBS buffer with 0.09 % (w/v) sodium azide and 2 % sucrose.

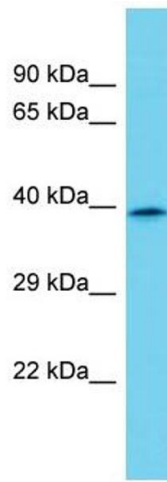
Preservative: Sodium azide

Precaution of Use: This product contains Sodium azide: a POISONOUS AND HAZARDOUS SUBSTANCE which should be handled by trained staff only.

Handling Advice: Avoid repeated freeze-thaw cycles.

Storage: -20 °C

Storage Comment: For short term use, store at 2-8°C up to 1 week. For long term storage, store at -20°C in small aliquots to prevent freeze-thaw cycles.



Western Blotting

Image 1. Host: Rabbit Target Name: CCNJL Sample Type: MDA-MB-435S Whole Cell lysates Antibody Dilution: 1.0ug/ml