



[Go to Product page](#)

Datasheet for ABIN2774517

## anti-CCDC121 antibody (Middle Region)

### 1 Image

#### Overview

Quantity:	100 µL
Target:	CCDC121
Binding Specificity:	Middle Region
Reactivity:	Human, Dog, Saccharomyces cerevisiae
Host:	Rabbit
Clonality:	Polyclonal
Conjugate:	This CCDC121 antibody is un-conjugated
Application:	Western Blotting (WB)

#### Product Details

Immunogen:	The immunogen is a synthetic peptide directed towards the middle region of Human CCDC121
Sequence:	QLLEESRELH REKLLVQAEN RFFLEYLTNK TEEYTEQPEK VWNSYLQKSG
Predicted Reactivity:	Dog: 85%, Human: 100%, Yeast: 100%
Characteristics:	This is a rabbit polyclonal antibody against CCDC121. It was validated on Western Blot.
Purification:	Affinity Purified

#### Target Details

Target:	CCDC121
Alternative Name:	CCDC121 ( <a href="#">CCDC121 Products</a> )
Background:	The function of this protein remains unknown.

## Target Details

---

Alias Symbols: -

Protein Interaction Partner: TFIP11, NUP62, USHBP1, RINT1, KDM1A,

Protein Size: 440

---

Molecular Weight: 50 kDa

---

Gene ID: 79635

---

NCBI Accession: [NM\\_001142683](#), [NP\\_001136155](#)

---

UniProt: [J3KQZ8](#)

---

## Application Details

---

Restrictions: For Research Use only

---

## Handling

---

Format: Liquid

---

Concentration: 1 mg/mL

---

Buffer: Liquid. Purified antibody supplied in 1x PBS buffer with 0.09 % (w/v) sodium azide and 2 % sucrose.

---

Preservative: Sodium azide

---

Precaution of Use: This product contains Sodium azide: a POISONOUS AND HAZARDOUS SUBSTANCE which should be handled by trained staff only.

---

Handling Advice: Avoid repeat freeze-thaw cycles.

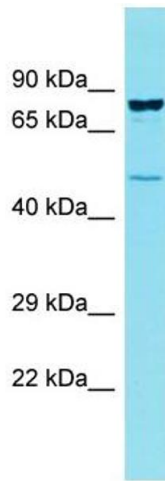
---

Storage: -20 °C

---

Storage Comment: For short term use, store at 2-8°C up to 1 week. For long term storage, store at -20°C in small aliquots to prevent freeze-thaw cycles.

---



### Western Blotting

**Image 1.** Host: Rabbit Target Name: CCDC121 Sample Type: OVCAR-3 Whole Cell lysates Antibody Dilution: 1.0ug/ml CCDC121 is supported by BioGPS gene expression data to be expressed in OVCAR3