

Datasheet for ABIN2774520
anti-TTC25 antibody (C-Term)[Go to Product page](#)

1 Image

Overview

Quantity:	100 µL
Target:	TTC25
Binding Specificity:	C-Term
Reactivity:	Human
Host:	Rabbit
Clonality:	Polyclonal
Conjugate:	This TTC25 antibody is un-conjugated
Application:	Western Blotting (WB)

Product Details

Immunogen:	The immunogen is a synthetic peptide directed towards the C-terminal region of Human TTC25
Sequence:	RLSGEFSRQE PEELKKLSEV GRREPEELGK TQFGEIGETK KTG NEMEKEY
Predicted Reactivity:	Human: 100%
Characteristics:	This is a rabbit polyclonal antibody against TTC25. It was validated on Western Blot.
Purification:	Affinity Purified

Target Details

Target:	TTC25
Alternative Name:	TTC25 (TTC25 Products)
Background:	The function of this protein remains unknown.

Target Details

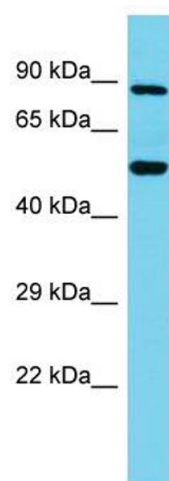
	Alias Symbols: - Protein Interaction Partner: KRT40, MEOX2, GOLGA2, CEP70, NECAB2, CCDC85B, MKRN3, MYOG, UBC, SNAI1, Protein Size: 672
Molecular Weight:	76 kDa
Gene ID:	83538
NCBI Accession:	NM_031421 , NP_113609
UniProt:	Q96NG3

Application Details

Application Notes:	Optimal working dilutions should be determined experimentally by the investigator.
Comment:	Antigen size: 672 AA
Restrictions:	For Research Use only

Handling

Format:	Liquid
Concentration:	Lot specific
Buffer:	Liquid. Purified antibody supplied in 1x PBS buffer with 0.09 % (w/v) sodium azide and 2 % sucrose.
Preservative:	Sodium azide
Precaution of Use:	This product contains Sodium azide: a POISONOUS AND HAZARDOUS SUBSTANCE which should be handled by trained staff only.
Handling Advice:	Avoid repeated freeze-thaw cycles.
Storage:	-20 °C
Storage Comment:	For short term use, store at 2-8°C up to 1 week. For long term storage, store at -20°C in small aliquots to prevent freeze-thaw cycles.



Western Blotting

Image 1. Host: Rabbit Target Name: TTC25 Sample Type: Fetal Lung lysates Antibody Dilution: 1.0ug/ml