

Datasheet for ABIN2774523  
**anti-TIMM29 antibody (C-Term)**[Go to Product page](#)

## 1 Image

## Overview

Quantity:	100 µL
Target:	TIMM29 (C19ORF52)
Binding Specificity:	C-Term
Reactivity:	Human, Mouse, Rat, Cow, Dog, Guinea Pig, Horse
Host:	Rabbit
Clonality:	Polyclonal
Conjugate:	This TIMM29 antibody is un-conjugated
Application:	Western Blotting (WB)

## Product Details

Immunogen:	The immunogen is a synthetic peptide directed towards the C-terminal region of Human C19orf52
Sequence:	PQQLHSETNE RLFDEKYKPV VLTDDQVDQA LWEEQVLQKE KKDRLALSQA
Predicted Reactivity:	Cow: 79%, Dog: 93%, Guinea Pig: 93%, Horse: 79%, Human: 100%, Mouse: 93%, Rat: 100%
Characteristics:	This is a rabbit polyclonal antibody against C19orf52. It was validated on Western Blot.
Purification:	Affinity Purified

## Target Details

Target:	TIMM29 (C19ORF52)
Alternative Name:	C19orf52 ( <a href="#">C19ORF52 Products</a> )

## Target Details

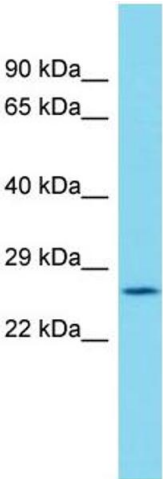
Background:	The function of this protein remains unknown. Alias Symbols: - Protein Interaction Partner: UBC, APOE, Protein Size: 260
Molecular Weight:	29 kDa
Gene ID:	90580
NCBI Accession:	<a href="#">NM_138358</a> , <a href="#">NP_612367</a>
UniProt:	<a href="#">Q9BSF4</a>
Pathways:	<a href="#">SARS-CoV-2 Protein Interactome</a>

## Application Details

Application Notes:	Optimal working dilutions should be determined experimentally by the investigator.
Comment:	Antigen size: 260 AA
Restrictions:	For Research Use only

## Handling

Format:	Liquid
Concentration:	Lot specific
Buffer:	Liquid. Purified antibody supplied in 1x PBS buffer with 0.09 % (w/v) sodium azide and 2 % sucrose.
Preservative:	Sodium azide
Precaution of Use:	This product contains Sodium azide: a POISONOUS AND HAZARDOUS SUBSTANCE which should be handled by trained staff only.
Handling Advice:	Avoid repeated freeze-thaw cycles.
Storage:	-20 °C
Storage Comment:	For short term use, store at 2-8°C up to 1 week. For long term storage, store at -20°C in small aliquots to prevent freeze-thaw cycles.



Western Blotting

**Image 1.** Host: Rabbit Target Name: C19orf52 Sample Type: Placenta lysates Antibody Dilution: 1.0ug/ml