



[Go to Product page](#)

Datasheet for ABIN2774525
anti-CCDC114 antibody (C-Term)

1 Image

Overview

Quantity:	100 µL
Target:	CCDC114
Binding Specificity:	C-Term
Reactivity:	Human, Mouse, Rat
Host:	Rabbit
Clonality:	Polyclonal
Conjugate:	This CCDC114 antibody is un-conjugated
Application:	Western Blotting (WB)

Product Details

Immunogen:	The immunogen is a synthetic peptide directed towards the C-terminal region of Human CCDC114
Sequence:	GSSTVLVPTR HPHAIPGSIL SHKTSRDRGS LGHVTFGGLS SSTGHLPSHI
Predicted Reactivity:	Human: 100%, Mouse: 83%, Rat: 83%
Characteristics:	This is a rabbit polyclonal antibody against CCDC114. It was validated on Western Blot.
Purification:	Affinity Purified

Target Details

Target:	CCDC114
Alternative Name:	CCDC114 (CCDC114 Products)

Target Details

Background: The function of this protein remains unknown.
Alias Symbols: -
Protein Interaction Partner: C1orf216, CCDC151, HAUS1, LNX1, TXN2, HGS, TPM3, KLC1,
Protein Size: 463

Molecular Weight: 50 kDa

Gene ID: 93233

NCBI Accession: [NM_144577](#), [NP_653178](#)

Application Details

Restrictions: For Research Use only

Handling

Format: Liquid

Concentration: 1 mg/mL

Buffer: Liquid. Purified antibody supplied in 1x PBS buffer with 0.09 % (w/v) sodium azide and 2 % sucrose.

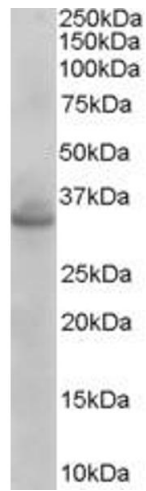
Preservative: Sodium azide

Precaution of Use: This product contains Sodium azide: a POISONOUS AND HAZARDOUS SUBSTANCE which should be handled by trained staff only.

Handling Advice: Avoid repeat freeze-thaw cycles.

Storage: -20 °C

Storage Comment: For short term use, store at 2-8°C up to 1 week. For long term storage, store at -20°C in small aliquots to prevent freeze-thaw cycles.



Western Blotting

Image 1.