



[Go to Product page](#)

Datasheet for ABIN2774526

anti-C10ORF71 antibody (C-Term)

1 Image

Overview

Quantity:	100 µL
Target:	C10ORF71
Binding Specificity:	C-Term
Reactivity:	Human
Host:	Rabbit
Clonality:	Polyclonal
Conjugate:	This C10ORF71 antibody is un-conjugated
Application:	Western Blotting (WB)

Product Details

Immunogen:	The immunogen is a synthetic peptide directed towards the C-terminal region of Human C10orf71
Sequence:	AERSSYENKE VEGELEM GPA GSSWCPDSRE HRPRKHLSLR LCNRDPEPGG
Predicted Reactivity:	Human: 100%
Characteristics:	This is a rabbit polyclonal antibody against C10orf71. It was validated on Western Blot.
Purification:	Affinity Purified

Target Details

Target:	C10ORF71
Alternative Name:	C10orf71 (C10ORF71 Products)

Target Details

Background: The function of this protein remains unknown.
Protein Size: 719

Molecular Weight: 79 kDa

Gene ID: 118461

Application Details

Restrictions: For Research Use only

Handling

Format: Liquid

Concentration: 1 mg/mL

Buffer: Liquid. Purified antibody supplied in 1x PBS buffer with 0.09 % (w/v) sodium azide and 2 % sucrose.

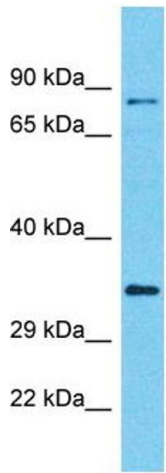
Preservative: Sodium azide

Precaution of Use: This product contains Sodium azide: a POISONOUS AND HAZARDOUS SUBSTANCE which should be handled by trained staff only.

Handling Advice: Avoid repeat freeze-thaw cycles.

Storage: -20 °C

Storage Comment: For short term use, store at 2-8°C up to 1 week. For long term storage, store at -20°C in small aliquots to prevent freeze-thaw cycles.



Host: Rabbit
Target Name: C10orf71
Sample Tissue: HCT15 Cell Lysate
Antibody Dilution: 1.0µg/ml

Western Blotting

Image 1. Host: Rabbit Target Name: C10orf71 Sample Type: HCT15 Whole cell lysates Antibody Dilution: 1.0ug/ml