



[Go to Product page](#)

Datasheet for ABIN2774527
anti-KDF1 antibody (Middle Region)

1 Image

Overview

Quantity:	100 µL
Target:	KDF1
Binding Specificity:	Middle Region
Reactivity:	Human, Mouse, Rat, Cow, Guinea Pig, Rabbit, Dog, Horse
Host:	Rabbit
Clonality:	Polyclonal
Conjugate:	This KDF1 antibody is un-conjugated
Application:	Western Blotting (WB)

Product Details

Immunogen:	The immunogen is a synthetic peptide directed towards the middle region of Mouse 1810019J16Rik
Sequence:	IIRISTRKSR SRPQTSEGRS ARSTAPAAAP DSGHETMLGS GLSQDELTVQ
Predicted Reactivity:	Cow: 93%, Dog: 93%, Guinea Pig: 93%, Horse: 86%, Human: 100%, Mouse: 93%, Rabbit: 93%, Rat: 93%
Characteristics:	This is a rabbit polyclonal antibody against 1810019J16Rik. It was validated on Western Blot.
Purification:	Affinity Purified

Target Details

Target:	KDF1
---------	------

Target Details

Alternative Name: 1810019J16Rik ([KDF1 Products](#))

Background: The function of this protein remains unknown.
Alias Symbols: -
Protein Size: 397

Molecular Weight: 43 kDa

Gene ID: 69073

NCBI Accession: [NM_001083916](#), [NP_001077385](#)

UniProt: [A2A9F4](#)

Application Details

Restrictions: For Research Use only

Handling

Format: Liquid

Concentration: 1 mg/mL

Buffer: Liquid. Purified antibody supplied in 1x PBS buffer with 0.09 % (w/v) sodium azide and 2 % sucrose.

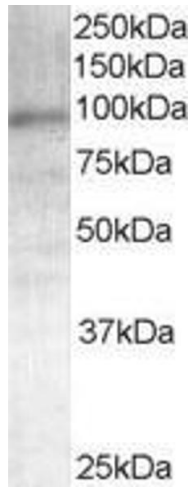
Preservative: Sodium azide

Precaution of Use: This product contains Sodium azide: a POISONOUS AND HAZARDOUS SUBSTANCE which should be handled by trained staff only.

Handling Advice: Avoid repeat freeze-thaw cycles.

Storage: -20 °C

Storage Comment: For short term use, store at 2-8°C up to 1 week. For long term storage, store at -20°C in small aliquots to prevent freeze-thaw cycles.



Western Blotting

Image 1.