

Datasheet for ABIN2774528  
**anti-WFDC3 antibody (N-Term)**[Go to Product page](#)

## 1 Image

## Overview

Quantity:	100 µL
Target:	WFDC3
Binding Specificity:	N-Term
Reactivity:	Human
Host:	Rabbit
Clonality:	Polyclonal
Conjugate:	This WFDC3 antibody is un-conjugated
Application:	Western Blotting (WB)

## Product Details

Immunogen:	The immunogen is a synthetic peptide directed towards the N-terminal region of Human WFDC3
Sequence:	SWITAGEHAK EGECPPHKNP CKELCQGDEL CPAEQKCCTT GCGRICRDIP
Predicted Reactivity:	Human: 100%
Characteristics:	This is a rabbit polyclonal antibody against WFDC3. It was validated on Western Blot.
Purification:	Affinity Purified

## Target Details

Target:	WFDC3
Alternative Name:	WFDC3 ( <a href="#">WFDC3 Products</a> )

## Target Details

Background:	<p>This gene encodes a member of the WAP-type four-disulfide core (WFDC) domain family. The WFDC domain, or WAP signature motif, contains eight cysteines forming four disulfide bonds at the core of the protein, and functions as a protease inhibitor. The encoded protein contains four WFDC domains. Most WFDC genes are localized to chromosome 20q12-q13 in two clusters: centromeric and telomeric. This gene belongs to the telomeric cluster. Alternatively spliced transcript variants have been observed but their full-length nature has not been determined.</p> <p>Alias Symbols: WAP14, dJ447F3.3</p> <p>Protein Interaction Partner: Dlg4,</p> <p>Protein Size: 231</p>
Molecular Weight:	22 kDa
Gene ID:	140686
NCBI Accession:	<a href="#">NM_080614</a> , <a href="#">NP_542181</a>
UniProt:	<a href="#">Q8IUB2</a>

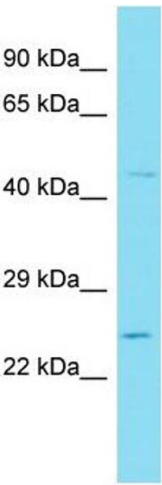
## Application Details

Application Notes:	Optimal working dilutions should be determined experimentally by the investigator.
Comment:	Antigen size: 231 AA
Restrictions:	For Research Use only

## Handling

Format:	Liquid
Concentration:	Lot specific
Buffer:	Liquid. Purified antibody supplied in 1x PBS buffer with 0.09 % (w/v) sodium azide and 2 % sucrose.
Preservative:	Sodium azide
Precaution of Use:	This product contains Sodium azide: a POISONOUS AND HAZARDOUS SUBSTANCE which should be handled by trained staff only.
Handling Advice:	Avoid repeated freeze-thaw cycles.
Storage:	-20 °C
Storage Comment:	For short term use, store at 2-8°C up to 1 week. For long term storage, store at -20°C in small

aliquots to prevent freeze-thaw cycles.



**Western Blotting**

**Image 1.** Host: Rabbit Target Name: WFDC3 Sample Type: 721\_B Whole Cell lysates Antibody Dilution: 1.0ug/ml