

Datasheet for ABIN2774537

**anti-C3orf54 antibody (Middle Region)**[Go to Product page](#)**1** Image

## Overview

Quantity:	100 µL
Target:	C3orf54 (FAM212A)
Binding Specificity:	Middle Region
Reactivity:	Human, Mouse, Rat, Cow, Dog, Guinea Pig, Horse, Rabbit, Zebrafish (Danio rerio)
Host:	Rabbit
Clonality:	Polyclonal
Conjugate:	This C3orf54 antibody is un-conjugated
Application:	Western Blotting (WB)

## Product Details

Immunogen:	The immunogen is a synthetic peptide directed towards the middle region of Human FAM212A
Sequence:	RAPVASVPPV HHPRPKSTPD ACLEHWQGLE AEDWTAALLN RGRSRQPLVL
Predicted Reactivity:	Cow: 100%, Dog: 100%, Guinea Pig: 100%, Horse: 100%, Human: 100%, Mouse: 100%, Rabbit: 100%, Rat: 100%, Zebrafish: 85%
Characteristics:	This is a rabbit polyclonal antibody against FAM212A. It was validated on Western Blot.
Purification:	Affinity Purified

## Target Details

Target:	C3orf54 (FAM212A)
Alternative Name:	FAM212A ( <a href="#">FAM212A Products</a> )

## Target Details

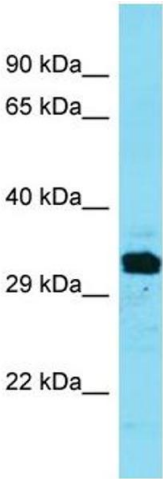
Background:	The function of this protein remains unknown. Alias Symbols: C3orf54, INKA1 Protein Interaction Partner: PAK7, APP, Protein Size: 287
Molecular Weight:	31 kDa
Gene ID:	389119
NCBI Accession:	<a href="#">NM_203370</a> , <a href="#">NP_976248</a>

## Application Details

Restrictions:	For Research Use only
---------------	-----------------------

## Handling

Format:	Liquid
Concentration:	1 mg/mL
Buffer:	Liquid. Purified antibody supplied in 1x PBS buffer with 0.09 % (w/v) sodium azide and 2 % sucrose.
Preservative:	Sodium azide
Precaution of Use:	This product contains Sodium azide: a POISONOUS AND HAZARDOUS SUBSTANCE which should be handled by trained staff only.
Handling Advice:	Avoid repeat freeze-thaw cycles.
Storage:	-20 °C
Storage Comment:	For short term use, store at 2-8°C up to 1 week. For long term storage, store at -20°C in small aliquots to prevent freeze-thaw cycles.



Western Blotting

**Image 1.** Host: Rabbit Target Name: FAM212A Sample Type: Fetal Liver lysates Antibody Dilution: 1.0ug/ml