



[Go to Product page](#)

Datasheet for ABIN2774539
anti-RGS7BP antibody (Middle Region)

1 Image

Overview

Quantity:	100 µL
Target:	RGS7BP
Binding Specificity:	Middle Region
Reactivity:	Mouse, Pig, Rabbit, Cow, Rat, Dog, Guinea Pig, Horse, Human
Host:	Rabbit
Clonality:	Polyclonal
Conjugate:	This RGS7BP antibody is un-conjugated
Application:	Western Blotting (WB)

Product Details

Immunogen:	The immunogen is a synthetic peptide directed towards the middle region of Human RGS7BP
Sequence:	RLYIQLQCCL EMYTTEMLKS ICLLGSLQFH RKGKEPGGGT KSLDCKIEES
Predicted Reactivity:	Cow: 93%, Dog: 100%, Guinea Pig: 86%, Horse: 100%, Human: 100%, Mouse: 77%, Pig: 100%, Rabbit: 79%, Rat: 92%
Characteristics:	This is a rabbit polyclonal antibody against RGS7BP. It was validated on Western Blot.
Purification:	Affinity Purified

Target Details

Target:	RGS7BP
Alternative Name:	RGS7BP (RGS7BP Products)

Target Details

Background: This gene encodes a protein that binds to all members of the R7 subfamily of regulators of G protein signaling and regulates their translocation between the nucleus and the plasma membrane. The encoded protein could be regulated by reversible palmitoylation, which anchors it to the plasma membrane. Depalmitoylation localizes the protein to the nucleus. Polymorphisms in this gene may be associated with risk of aspirin-exacerbated respiratory disease. Alternatively spliced transcript variants encoding multiple isoforms have been observed for this gene.

Alias Symbols: R7BP

Protein Interaction Partner: GNB5, RGS9,

Protein Size: 257

Molecular Weight: 28 kDa

Gene ID: 401190

NCBI Accession: [NM_001029875](#), [NP_001025046](#)

UniProt: [Q6MZT1](#)

Application Details

Application Notes: Optimal working dilution should be determined by the investigator.

Restrictions: For Research Use only

Handling

Format: Liquid

Concentration: 1 mg/mL

Buffer: Liquid. Purified antibody supplied in 1x PBS buffer with 0.09 % (w/v) sodium azide and 2 % sucrose.

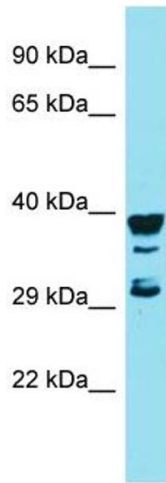
Preservative: Sodium azide

Precaution of Use: This product contains Sodium azide: a POISONOUS AND HAZARDOUS SUBSTANCE which should be handled by trained staff only.

Handling Advice: Avoid repeat freeze-thaw cycles.

Storage: -20 °C

Storage Comment: For short term use, store at 2-8°C up to 1 week. For long term storage, store at -20°C in small aliquots to prevent freeze-thaw cycles.



Western Blotting

Image 1. Host: Rabbit Target Name: RGS7BP Sample Type: MCF7 Whole Cell lysates Antibody Dilution: 1.0ug/ml