



[Go to Product page](#)

Datasheet for ABIN2774540

## anti-C4ORF47 antibody (C-Term)

### 1 Image

#### Overview

Quantity:	100 µL
Target:	C4ORF47
Binding Specificity:	C-Term
Reactivity:	Human, Mouse, Rabbit, Rat, Zebrafish (Danio rerio), Cow, Dog, Guinea Pig, Horse
Host:	Rabbit
Clonality:	Polyclonal
Conjugate:	This C4ORF47 antibody is un-conjugated
Application:	Western Blotting (WB)

#### Product Details

Immunogen:	The immunogen is a synthetic peptide directed towards the C-terminal region of Human C4orf47
Sequence:	FDANPYFSEE SLPIIKKEEK KKTISNTFKP SSPGKKPGGM KAGTFDPYPS
Predicted Reactivity:	Cow: 93%, Dog: 93%, Guinea Pig: 93%, Horse: 86%, Human: 100%, Mouse: 93%, Rabbit: 93%, Rat: 93%, Zebrafish: 86%
Characteristics:	This is a rabbit polyclonal antibody against C4orf47. It was validated on Western Blot.
Purification:	Affinity Purified

#### Target Details

Target:	C4ORF47
---------	---------

## Target Details

---

Alternative Name: C4orf47 ([C4ORF47 Products](#))

---

Background: The function of this protein remains unknown.

Alias Symbols: -

Protein Size: 309

---

Molecular Weight: 33 kDa

---

Gene ID: 441054

---

NCBI Accession: [NM\\_001114357](#), [NP\\_001107829](#)

---

UniProt: [A7E2U8](#)

---

## Application Details

---

Restrictions: For Research Use only

---

## Handling

---

Format: Liquid

---

Concentration: 1 mg/mL

---

Buffer: Liquid. Purified antibody supplied in 1x PBS buffer with 0.09 % (w/v) sodium azide and 2 % sucrose.

---

Preservative: Sodium azide

---

Precaution of Use: This product contains Sodium azide: a POISONOUS AND HAZARDOUS SUBSTANCE which should be handled by trained staff only.

---

Handling Advice: Avoid repeat freeze-thaw cycles.

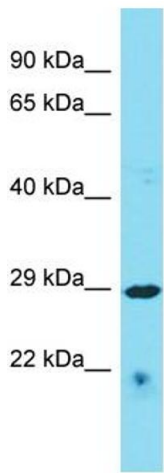
---

Storage: -20 °C

---

Storage Comment: For short term use, store at 2-8°C up to 1 week. For long term storage, store at -20°C in small aliquots to prevent freeze-thaw cycles.

---



Host: Rabbit  
Target Name: C4orf47  
Sample Tissue: HepG2 Cell Lysate  
Antibody Dilution: 1.0µg/ml

### Western Blotting

**Image 1.** Host: Rabbit Target Name: C4orf47 Sample Type: HepG2 Whole Cell lysates Antibody Dilution: 1.0ug/ml