

Datasheet for ABIN2774541
anti-C4ORF51 antibody (C-Term)[Go to Product page](#)

1 Image

Overview

Quantity:	100 µL
Target:	C4ORF51
Binding Specificity:	C-Term
Reactivity:	Human
Host:	Rabbit
Clonality:	Polyclonal
Conjugate:	This C4ORF51 antibody is un-conjugated
Application:	Western Blotting (WB)

Product Details

Immunogen:	The immunogen is a synthetic peptide directed towards the C-terminal region of Human C4orf51
Sequence:	ITRPFKKSFD VKHGVAHQIW DFGDCFPTTP NYGKYCVRPK KPAQEALINY
Predicted Reactivity:	Human: 100%
Characteristics:	This is a rabbit polyclonal antibody against C4orf51. It was validated on Western Blot.
Purification:	Affinity Purified

Target Details

Target:	C4ORF51
Alternative Name:	C4orf51 (C4ORF51 Products)

Target Details

Background: The function of this protein remains unknown.
Alias Symbols: -
Protein Interaction Partner: UBC,
Protein Size: 202

Molecular Weight: 22 kDa

Gene ID: 646603

NCBI Accession: [NM_001080531](#), [NP_001074000](#)

UniProt: [C9J302](#)

Application Details

Restrictions: For Research Use only

Handling

Format: Liquid

Concentration: 1 mg/mL

Buffer: Liquid. Purified antibody supplied in 1x PBS buffer with 0.09 % (w/v) sodium azide and 2 % sucrose.

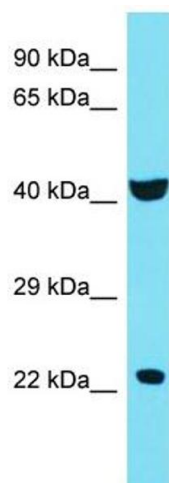
Preservative: Sodium azide

Precaution of Use: This product contains Sodium azide: a POISONOUS AND HAZARDOUS SUBSTANCE which should be handled by trained staff only.

Handling Advice: Avoid repeat freeze-thaw cycles.

Storage: -20 °C

Storage Comment: For short term use, store at 2-8°C up to 1 week. For long term storage, store at -20°C in small aliquots to prevent freeze-thaw cycles.



Western Blotting

Image 1. Host: Rabbit Target Name: C4orf51 Sample Type: 721_B Whole Cell lysates Antibody Dilution: 1.0ug/ml