



[Go to Product page](#)

Datasheet for ABIN2774545
anti-FAM25E antibody (C-Term)

1 Image

Overview

Quantity:	100 µL
Target:	FAM25E
Binding Specificity:	C-Term
Reactivity:	Human, Cow, Dog, Horse, Mouse, Pig
Host:	Rabbit
Clonality:	Polyclonal
Conjugate:	This FAM25E antibody is un-conjugated
Application:	Western Blotting (WB)

Product Details

Immunogen:	The immunogen is a synthetic peptide directed towards the C-terminal region of human FAM25E
Sequence:	RGQRACSEPS PWTCLLCVH AMEEVVKEVV GHAKETGEKA IAEAIIKKAQE
Predicted Reactivity:	Cow: 83%, Dog: 75%, Horse: 86%, Human: 100%, Mouse: 92%, Pig: 86%
Characteristics:	This is a rabbit polyclonal antibody against FAM25E. It was validated on Western Blot.
Purification:	Affinity Purified

Target Details

Target:	FAM25E
Alternative Name:	FAM25E (FAM25E Products)

Target Details

Background: The function of this protein remains unknown.
Protein Size: 175

Molecular Weight: 19 kDa

UniProt: [A8MYX2](#)

Application Details

Restrictions: For Research Use only

Handling

Format: Liquid

Concentration: 1 mg/mL

Buffer: Liquid. Purified antibody supplied in 1x PBS buffer with 0.09 % (w/v) sodium azide and 2 % sucrose.

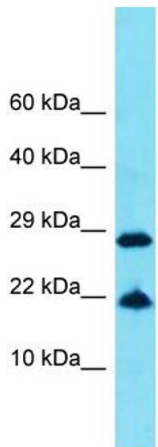
Preservative: Sodium azide

Precaution of Use: This product contains Sodium azide: a POISONOUS AND HAZARDOUS SUBSTANCE which should be handled by trained staff only.

Handling Advice: Avoid repeat freeze-thaw cycles.

Storage: -20 °C

Storage Comment: For short term use, store at 2-8°C up to 1 week. For long term storage, store at -20°C in small aliquots to prevent freeze-thaw cycles.



Host: Rabbit
Target Name: FAM25E
Sample Tissue: COLO205 Cell Lysate
Antibody Dilution: 1.0µg/ml

Western Blotting

Image 1. Host: Rabbit Target Name: FAM25E Sample
Tissue: Human COLO205 Whole Cell Antibody Dilution:
1ug/ml