

Datasheet for ABIN2774546
anti-FAM90A12P antibody (Middle Region)[Go to Product page](#)

1 Image

Overview

Quantity:	100 µL
Target:	FAM90A12P
Binding Specificity:	Middle Region
Reactivity:	Human
Host:	Rabbit
Clonality:	Polyclonal
Conjugate:	This FAM90A12P antibody is un-conjugated
Application:	Western Blotting (WB)

Product Details

Immunogen:	The immunogen is a synthetic peptide directed towards the middle region of human FAM90A12P
Sequence:	PLLVKPTHS RPEGGCREVP QAASKTHGLP QAARPQAQDK RPAVTSLP
Predicted Reactivity:	Human: 100%
Characteristics:	This is a rabbit polyclonal antibody against FAM90A12P. It was validated on Western Blot.
Purification:	Affinity Purified

Target Details

Target:	FAM90A12P
Alternative Name:	FAM90A12P (FAM90A12P Products)

Target Details

Background:	The function of this protein remains unknown. Protein Size: 464
-------------	--

Molecular Weight:	49 kDa
-------------------	--------

UniProt:	A6NDY2
----------	------------------------

Application Details

Restrictions:	For Research Use only
---------------	-----------------------

Handling

Format:	Liquid
---------	--------

Concentration:	1 mg/mL
----------------	---------

Buffer:	Liquid. Purified antibody supplied in 1x PBS buffer with 0.09 % (w/v) sodium azide and 2 % sucrose.
---------	---

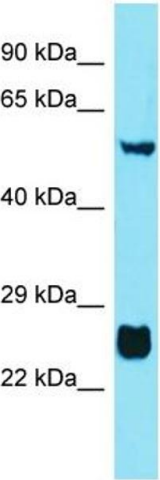
Preservative:	Sodium azide
---------------	--------------

Precaution of Use:	This product contains Sodium azide: a POISONOUS AND HAZARDOUS SUBSTANCE which should be handled by trained staff only.
--------------------	--

Handling Advice:	Avoid repeat freeze-thaw cycles.
------------------	----------------------------------

Storage:	-20 °C
----------	--------

Storage Comment:	For short term use, store at 2-8°C up to 1 week. For long term storage, store at -20°C in small aliquots to prevent freeze-thaw cycles.
------------------	---



Host: Rabbit
Target Name: FAM90A12P
Sample Tissue: A549 Cell Lysate
Antibody Dilution: 1.0µg/ml

Western Blotting

Image 1. Host: Rabbit Target Name: FAM90A12P Sample
Tissue: Human A549 Whole Cell Antibody Dilution: 1 ug/ml