

Datasheet for ABIN2774547
anti-FAM153B antibody (C-Term)



[Go to Product page](#)

1 Image

Overview

Quantity:	100 µL
Target:	FAM153B
Binding Specificity:	C-Term
Reactivity:	Human
Host:	Rabbit
Clonality:	Polyclonal
Conjugate:	This FAM153B antibody is un-conjugated
Application:	Western Blotting (WB)

Product Details

Immunogen:	The immunogen is a synthetic peptide directed towards the C-terminal region of human FAM153B
Sequence:	DPATLAKQLE DSTITGSHQQ MSASPSSAPA EEATEKTKVE EEVKTRKPKK
Predicted Reactivity:	Human: 100%
Characteristics:	This is a rabbit polyclonal antibody against FAM153B. It was validated on Western Blot.
Purification:	Affinity Purified

Target Details

Target:	FAM153B
Alternative Name:	FAM153B (FAM153B Products)

Target Details

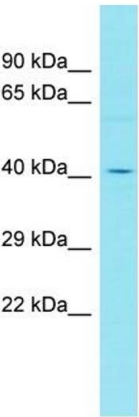
Background:	The function of this protein remains unknown. Protein Size: 387
Molecular Weight:	42 kDa
UniProt:	P0C7A2

Application Details

Restrictions:	For Research Use only
---------------	-----------------------

Handling

Format:	Liquid
Concentration:	1 mg/mL
Buffer:	Liquid. Purified antibody supplied in 1x PBS buffer with 0.09 % (w/v) sodium azide and 2 % sucrose.
Preservative:	Sodium azide
Precaution of Use:	This product contains Sodium azide: a POISONOUS AND HAZARDOUS SUBSTANCE which should be handled by trained staff only.
Handling Advice:	Avoid repeat freeze-thaw cycles.
Storage:	-20 °C
Storage Comment:	For short term use, store at 2-8°C up to 1 week. For long term storage, store at -20°C in small aliquots to prevent freeze-thaw cycles.



Host: Rabbit
Target Name: FAM153B
Sample Tissue: MDA-MB-435s Cell Lysate
Antibody Dilution: 1.0µg/ml

Western Blotting

Image 1. Host: Rabbit Target Name: FAM153B Sample Type: MDA-MB-435s Whole cell lysates Antibody Dilution: 1.0ug/ml