



[Go to Product page](#)

Datasheet for ABIN2774549
anti-GATSL3 antibody (C-Term)

1 Image

Overview

Quantity:	100 µL
Target:	GATSL3
Binding Specificity:	C-Term
Reactivity:	Human, Cow, Dog, Guinea Pig, Horse, Mouse, Rabbit, Rat
Host:	Rabbit
Clonality:	Polyclonal
Conjugate:	This GATSL3 antibody is un-conjugated
Application:	Western Blotting (WB)

Product Details

Immunogen:	The immunogen is a synthetic peptide directed towards the C-terminal region of Human GATSL3
Sequence:	EPSSITFFAF SLIEGYISIV MDAETQKKFP SDLLLTSSSG ELWRMVRIGG
Predicted Reactivity:	Cow: 100%, Dog: 100%, Guinea Pig: 100%, Horse: 100%, Human: 100%, Mouse: 86%, Rabbit: 100%, Rat: 100%
Characteristics:	This is a rabbit polyclonal antibody against GATSL3. It was validated on Western Blot.
Purification:	Affinity Purified

Target Details

Target:	GATSL3
---------	--------

Target Details

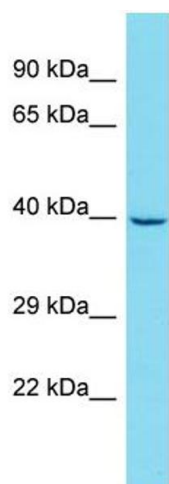
Alternative Name:	GATSL3 (GATSL3 Products)
Background:	The function of this protein remains unknown. Alias Symbols: - Protein Interaction Partner: GATSL3, ZC2HC1A, Protein Size: 329
Molecular Weight:	36 kDa
Gene ID:	652968
NCBI Accession:	NM_001037666 , NP_001032755
UniProt:	Q8WTX7

Application Details

Restrictions:	For Research Use only
---------------	-----------------------

Handling

Format:	Liquid
Concentration:	1 mg/mL
Buffer:	Liquid. Purified antibody supplied in 1x PBS buffer with 0.09 % (w/v) sodium azide and 2 % sucrose.
Preservative:	Sodium azide
Precaution of Use:	This product contains Sodium azide: a POISONOUS AND HAZARDOUS SUBSTANCE which should be handled by trained staff only.
Handling Advice:	Avoid repeat freeze-thaw cycles.
Storage:	-20 °C
Storage Comment:	For short term use, store at 2-8°C up to 1 week. For long term storage, store at -20°C in small aliquots to prevent freeze-thaw cycles.



Western Blotting

Image 1.