

Datasheet for ABIN2774553
anti-KDEL2 antibody (C-Term)[Go to Product page](#)

1 Image

Overview

Quantity:	100 µL
Target:	KDEL2
Binding Specificity:	C-Term
Reactivity:	Human, Horse, Mouse, Rat, Dog, Zebrafish (Danio rerio), Guinea Pig, Rabbit, Cow
Host:	Rabbit
Clonality:	Polyclonal
Conjugate:	This KDEL2 antibody is un-conjugated
Application:	Western Blotting (WB)

Product Details

Immunogen:	The immunogen is a synthetic peptide directed towards the C-terminal region of Human KDEL2
Sequence:	DLLEKVKWAK ENDEEAKKIA KEGQLMARDL LQPHRLYCY YQVLQKYAER
Predicted Reactivity:	Cow: 100%, Dog: 86%, Guinea Pig: 100%, Horse: 93%, Human: 100%, Mouse: 100%, Rabbit: 100%, Rat: 93%, Zebrafish: 83%
Characteristics:	This is a rabbit polyclonal antibody against KDEL2. It was validated on Western Blot.
Purification:	Affinity Purified

Target Details

Target:	KDEL2
---------	-------

Target Details

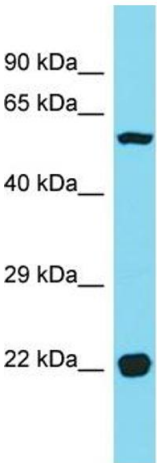
Alternative Name:	KDEL2 (KDEL2 Products)
Background:	The function of this protein remains unknown. Alias Symbols: - Protein Interaction Partner: FBXO6, UBC, Protein Size: 507
Molecular Weight:	56 kDa
Gene ID:	143888
NCBI Accession:	NM_153705 , NP_714916
UniProt:	Q7Z4H8
Pathways:	SARS-CoV-2 Protein Interactome

Application Details

Application Notes:	Optimal working dilution should be determined by the investigator.
Restrictions:	For Research Use only

Handling

Format:	Liquid
Concentration:	1 mg/mL
Buffer:	Liquid. Purified antibody supplied in 1x PBS buffer with 0.09 % (w/v) sodium azide and 2 % sucrose.
Preservative:	Sodium azide
Precaution of Use:	This product contains Sodium azide: a POISONOUS AND HAZARDOUS SUBSTANCE which should be handled by trained staff only.
Handling Advice:	Avoid repeat freeze-thaw cycles.
Storage:	-20 °C
Storage Comment:	For short term use, store at 2-8°C up to 1 week. For long term storage, store at -20°C in small aliquots to prevent freeze-thaw cycles.



Host: Rabbit
Target Name: KDELC2
Sample Tissue: HT1080 Cell Lysate
Antibody Dilution: 1.0µg/ml

Western Blotting

Image 1. Host: Rabbit Target Name: KDELC2 Sample Type: HT1080 Whole Cell lysates Antibody Dilution: 1.0ug/ml