

Datasheet for ABIN2774554  
**anti-KIAA1614 antibody (C-Term)**[Go to Product page](#)

## 1 Image

## Overview

Quantity:	100 µL
Target:	KIAA1614
Binding Specificity:	C-Term
Reactivity:	Human, Dog
Host:	Rabbit
Clonality:	Polyclonal
Conjugate:	This KIAA1614 antibody is un-conjugated
Application:	Western Blotting (WB)

## Product Details

Immunogen:	The immunogen is a synthetic peptide directed towards the C-terminal region of Human KIAA1614
Sequence:	SKGNRSSLYL VAGPGDHSAA GRPAKTSPRR ALSVEDVGAP SLARTVGRLV
Predicted Reactivity:	Dog: 86%, Human: 100%
Characteristics:	This is a rabbit polyclonal antibody against KIAA1614. It was validated on Western Blot.
Purification:	Affinity Purified

## Target Details

Target:	KIAA1614
Alternative Name:	KIAA1614 ( <a href="#">KIAA1614 Products</a> )

## Target Details

Background:	The function of this protein remains unknown. Alias Symbols: RP11-46A10.3 Protein Interaction Partner: UBC, Protein Size: 811
-------------	--

Molecular Weight:	89 kDa
-------------------	--------

Gene ID:	57710
----------	-------

NCBI Accession:	<a href="#">NM_020950</a> , <a href="#">NP_066001</a>
-----------------	---

## Application Details

Application Notes:	Optimal working dilution should be determined by the investigator.
--------------------	--

Restrictions:	For Research Use only
---------------	-----------------------

## Handling

Format:	Liquid
---------	--------

Concentration:	1 mg/mL
----------------	---------

Buffer:	Liquid. Purified antibody supplied in 1x PBS buffer with 0.09 % (w/v) sodium azide and 2 % sucrose.
---------	---

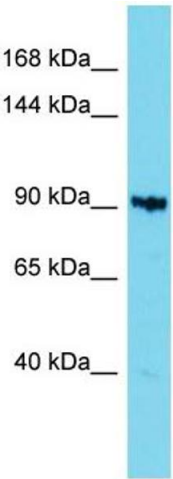
Preservative:	Sodium azide
---------------	--------------

Precaution of Use:	This product contains Sodium azide: a POISONOUS AND HAZARDOUS SUBSTANCE which should be handled by trained staff only.
--------------------	--

Handling Advice:	Avoid repeat freeze-thaw cycles.
------------------	----------------------------------

Storage:	-20 °C
----------	--------

Storage Comment:	For short term use, store at 2-8°C up to 1 week. For long term storage, store at -20°C in small aliquots to prevent freeze-thaw cycles.
------------------	---



**Western Blotting**

**Image 1.** Host: Rabbit Target Name: KIAA1614 Sample Type: 721\_B Whole Cell lysates Antibody Dilution: 1.0ug/ml KIAA1614 is supported by BioGPS gene expression data to be expressed in 721\_B