

Datasheet for ABIN2774556  
**anti-LMOD3 antibody (N-Term)**



[Go to Product page](#)

1 Image

## Overview

Quantity:	100 µL
Target:	LMOD3
Binding Specificity:	N-Term
Reactivity:	Human, Cow, Dog, Horse
Host:	Rabbit
Clonality:	Polyclonal
Conjugate:	This LMOD3 antibody is un-conjugated
Application:	Western Blotting (WB)

## Product Details

Immunogen:	The immunogen is a synthetic peptide directed towards the N-terminal region of Human LMOD3
Sequence:	VKSEKTQEE HEEIEKRKN MAQYLKEKLN NEIVANKRES KGSSNIQETD
Predicted Reactivity:	Cow: 77%, Dog: 77%, Horse: 79%, Human: 100%
Characteristics:	This is a rabbit polyclonal antibody against LMOD3. It was validated on Western Blot.
Purification:	Affinity Purified

## Target Details

Target:	LMOD3
Alternative Name:	LMOD3 ( <a href="#">LMOD3 Products</a> )

## Target Details

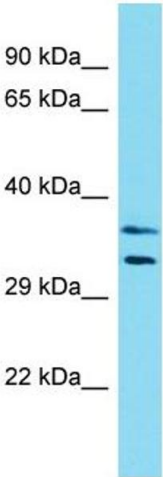
Background:	The function of this protein remains unknown. Protein Interaction Partner: KLHL40, Protein Size: 348
Molecular Weight:	38 kDa
Gene ID:	56203

## Application Details

Restrictions:	For Research Use only
---------------	-----------------------

## Handling

Format:	Liquid
Concentration:	1 mg/mL
Buffer:	Liquid. Purified antibody supplied in 1x PBS buffer with 0.09 % (w/v) sodium azide and 2 % sucrose.
Preservative:	Sodium azide
Precaution of Use:	This product contains Sodium azide: a POISONOUS AND HAZARDOUS SUBSTANCE which should be handled by trained staff only.
Handling Advice:	Avoid repeat freeze-thaw cycles.
Storage:	-20 °C
Storage Comment:	For short term use, store at 2-8°C up to 1 week. For long term storage, store at -20°C in small aliquots to prevent freeze-thaw cycles.



**Western Blotting**

**Image 1.**