



[Go to Product page](#)

Datasheet for ABIN2774561
anti-ODF3L2 antibody (C-Term)

1 Image

Overview

Quantity:	100 µL
Target:	ODF3L2
Binding Specificity:	C-Term
Reactivity:	Human, Cow, Dog, Horse, Mouse, Rat
Host:	Rabbit
Clonality:	Polyclonal
Conjugate:	This ODF3L2 antibody is un-conjugated
Application:	Western Blotting (WB)

Product Details

Immunogen:	The immunogen is a synthetic peptide directed towards the C-terminal region of Human ODF3L2
Sequence:	PGPGQYDSPD ANTYRQLRPA FTMLGRPRAP RPLEETPGPG AHCPEQVTVN
Predicted Reactivity:	Cow: 86%, Dog: 86%, Horse: 77%, Human: 100%, Mouse: 86%, Rat: 86%
Characteristics:	This is a rabbit polyclonal antibody against ODF3L2. It was validated on Western Blot.
Purification:	Affinity Purified

Target Details

Target:	ODF3L2
Alternative Name:	ODF3L2 (ODF3L2 Products)

Target Details

Background: The function of this protein remains unknown.
Alias Symbols: C19orf19
Protein Interaction Partner: SRPK1, EGFR,
Protein Size: 289

Molecular Weight: 30 kDa

Gene ID: 284451

NCBI Accession: [NM_182577](#), [NP_872383](#)

UniProt: [Q3SX64](#)

Application Details

Restrictions: For Research Use only

Handling

Format: Liquid

Concentration: 1 mg/mL

Buffer: Liquid. Purified antibody supplied in 1x PBS buffer with 0.09 % (w/v) sodium azide and 2 % sucrose.

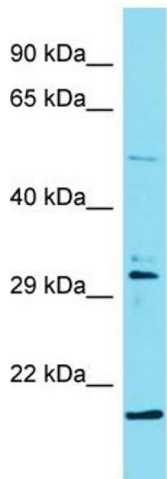
Preservative: Sodium azide

Precaution of Use: This product contains Sodium azide: a POISONOUS AND HAZARDOUS SUBSTANCE which should be handled by trained staff only.

Handling Advice: Avoid repeat freeze-thaw cycles.

Storage: -20 °C

Storage Comment: For short term use, store at 2-8°C up to 1 week. For long term storage, store at -20°C in small aliquots to prevent freeze-thaw cycles.



Host: Rabbit
Target Name: ODF3L2
Sample Tissue: MCF7 Cell Lysate
Antibody Dilution: 1.0µg/ml

Western Blotting

Image 1. Host: Rabbit Target Name: ODF3L2 Sample Type: MCF7 Whole Cell lysates Antibody Dilution: 1.0ug/ml