



[Go to Product page](#)

Datasheet for ABIN2774562
anti-OR2A25 antibody (C-Term)

1 Image

Overview

Quantity:	100 µL
Target:	OR2A25
Binding Specificity:	C-Term
Reactivity:	Human, Rabbit
Host:	Rabbit
Clonality:	Polyclonal
Conjugate:	This OR2A25 antibody is un-conjugated
Application:	Western Blotting (WB)

Product Details

Immunogen:	The immunogen is a synthetic peptide directed towards the C-terminal region of Human OR2A25
Sequence:	LCVVGLFYGT AIIMYVEPQY ESPKEQKKYL LLFHSLFNPM LNPLIYSLRN
Predicted Reactivity:	Human: 100%, Rabbit: 79%
Characteristics:	This is a rabbit polyclonal antibody against OR2A25. It was validated on Western Blot.
Purification:	Affinity Purified

Target Details

Target:	OR2A25
Alternative Name:	OR2A25 (OR2A25 Products)

Target Details

Background: Olfactory receptors interact with odorant molecules in the nose, to initiate a neuronal response that triggers the perception of a smell. The olfactory receptor proteins are members of a large family of G-protein-coupled receptors (GPCR) arising from single coding-exon genes. Olfactory receptors share a 7-transmembrane domain structure with many neurotransmitter and hormone receptors and are responsible for the recognition and G protein-mediated transduction of odorant signals. The olfactory receptor gene family is the largest in the genome. The nomenclature assigned to the olfactory receptor genes and proteins for this organism is independent of other organisms.

Alias Symbols: OR2A24P, OR2A25P, OR2A27

Protein Size: 310

Molecular Weight: 34 kDa

Gene ID: 392138

NCBI Accession: [NM_001004488](#), [NP_001004488](#)

UniProt: [A4D2G3](#)

Application Details

Restrictions: For Research Use only

Handling

Format: Liquid

Concentration: 1 mg/mL

Buffer: Liquid. Purified antibody supplied in 1x PBS buffer with 0.09 % (w/v) sodium azide and 2 % sucrose.

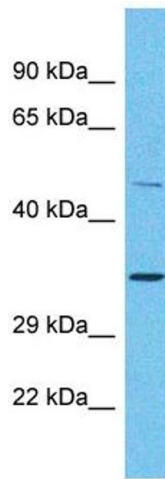
Preservative: Sodium azide

Precaution of Use: This product contains Sodium azide: a POISONOUS AND HAZARDOUS SUBSTANCE which should be handled by trained staff only.

Handling Advice: Avoid repeat freeze-thaw cycles.

Storage: -20 °C

Storage Comment: For short term use, store at 2-8°C up to 1 week. For long term storage, store at -20°C in small aliquots to prevent freeze-thaw cycles.



Western Blotting

Image 1. Host: Rabbit Target Name: OR2A25 Sample Type: Placenta lysates Antibody Dilution: 1.0ug/ml