



[Go to Product page](#)

Datasheet for ABIN2774569
anti-OR9Q1 antibody (C-Term)

1 Image

Overview

Quantity:	100 µL
Target:	OR9Q1
Binding Specificity:	C-Term
Reactivity:	Human, Rat
Host:	Rabbit
Clonality:	Polyclonal
Conjugate:	This OR9Q1 antibody is un-conjugated
Application:	Western Blotting (WB)

Product Details

Immunogen:	The immunogen is a synthetic peptide directed towards the C-terminal region of Human OR9Q1
Sequence:	SQAKTFSTCT SHLTAVSLFF GTLIFMYLRG NSDQSSEKNR VSVLYTEVI
Predicted Reactivity:	Human: 100%, Rat: 85%
Characteristics:	This is a rabbit polyclonal antibody against OR9Q1. It was validated on Western Blot.
Purification:	Affinity Purified

Target Details

Target:	OR9Q1
Alternative Name:	OR9Q1 (OR9Q1 Products)
Background:	Olfactory receptors interact with odorant molecules in the nose, to initiate a neuronal response

Target Details

that triggers the perception of a smell. The olfactory receptor proteins are members of a large family of G-protein-coupled receptors (GPCR) arising from single coding-exon genes. Olfactory receptors share a 7-transmembrane domain structure with many neurotransmitter and hormone receptors and are responsible for the recognition and G protein-mediated transduction of odorant signals. The olfactory receptor gene family is the largest in the genome. The nomenclature assigned to the olfactory receptor genes and proteins for this organism is independent of other organisms.

Alias Symbols: -

Protein Size: 310

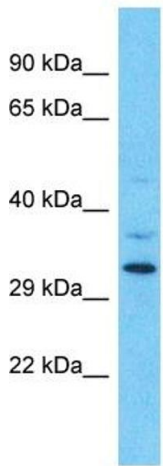
Molecular Weight:	34 kDa
Gene ID:	219956
NCBI Accession:	NM_001005212 , NP_001005212
UniProt:	Q8NGQ5

Application Details

Application Notes:	Optimal working dilution should be determined by the investigator.
Restrictions:	For Research Use only

Handling

Format:	Liquid
Concentration:	1 mg/mL
Buffer:	Liquid. Purified antibody supplied in 1x PBS buffer with 0.09 % (w/v) sodium azide and 2 % sucrose.
Preservative:	Sodium azide
Precaution of Use:	This product contains Sodium azide: a POISONOUS AND HAZARDOUS SUBSTANCE which should be handled by trained staff only.
Handling Advice:	Avoid repeat freeze-thaw cycles.
Storage:	-20 °C
Storage Comment:	For short term use, store at 2-8°C up to 1 week. For long term storage, store at -20°C in small aliquots to prevent freeze-thaw cycles.



Host: Rabbit
Target Name: OR9Q1
Sample Tissue: HT1080 Cell Lysate
Antibody Dilution: 1.0µg/ml

Western Blotting

Image 1. Host: Rabbit Target Name: OR9Q1 Sample Type: HT1080 Whole Cell lysates Antibody Dilution: 1.0ug/ml