

Datasheet for ABIN2774580
anti-SPSB3 antibody (C-Term)[Go to Product page](#)

1 Image

Overview

Quantity:	100 µL
Target:	SPSB3
Binding Specificity:	C-Term
Reactivity:	Human
Host:	Rabbit
Clonality:	Polyclonal
Conjugate:	This SPSB3 antibody is un-conjugated
Application:	Western Blotting (WB)

Product Details

Immunogen:	The immunogen is a synthetic peptide directed towards the C-terminal region of Human SPSB3
Sequence:	PGLKQVLHNK LGWVLSMSCS RRKAPVSDPQ AATSAHPSSR EPRPCQRKRC
Predicted Reactivity:	Human: 100%
Characteristics:	This is a rabbit polyclonal antibody against SPSB3. It was validated on Western Blot.
Purification:	Affinity Purified

Target Details

Target:	SPSB3
Alternative Name:	SPSB3 (SPSB3 Products)
Background:	SPSB3 may be a substrate recognition component of a SCF-like ECS (Elongin BC-CUL2/5-

Target Details

SOCS-box protein) E3 ubiquitin-protein ligase complex which mediates the ubiquitination and subsequent proteasomal degradation of target proteins.

Alias Symbols: C16orf31, SSB3

Protein Interaction Partner: ENKD1, NUMBL, HSP90AA1, CSNK2B, CUL5, MET, UBC, TCEB1,

Protein Size: 355

Molecular Weight: 39 kDa

Gene ID: 90864

NCBI Accession: [NM_080861](#), [NP_543137](#)

UniProt: [Q6PJ21](#)

Application Details

Application Notes: Optimal working dilution should be determined by the investigator.

Restrictions: For Research Use only

Handling

Format: Liquid

Concentration: 1 mg/mL

Buffer: Liquid. Purified antibody supplied in 1x PBS buffer with 0.09 % (w/v) sodium azide and 2 % sucrose.

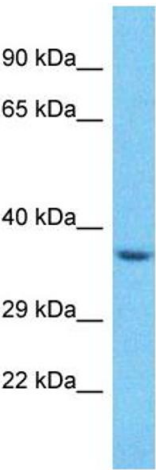
Preservative: Sodium azide

Precaution of Use: This product contains Sodium azide: a POISONOUS AND HAZARDOUS SUBSTANCE which should be handled by trained staff only.

Handling Advice: Avoid repeat freeze-thaw cycles.

Storage: -20 °C

Storage Comment: For short term use, store at 2-8°C up to 1 week. For long term storage, store at -20°C in small aliquots to prevent freeze-thaw cycles.



Host: Rabbit
Target Name: SPSB3
Sample Tissue: HepG2 Cell Lysate
Antibody Dilution: 1.0µg/ml

Western Blotting

Image 1. Host: Rabbit Target Name: SPSB3 Sample Type: HepG2 Whole Cell lysates Antibody Dilution: 1.0ug/ml