



[Go to Product page](#)

Datasheet for ABIN2774590
anti-NEURL1B antibody (C-Term)

1 Image

Overview

Quantity:	100 µL
Target:	NEURL1B
Binding Specificity:	C-Term
Reactivity:	Human, Mouse, Rabbit, Rat, Cow, Dog, Guinea Pig
Host:	Rabbit
Clonality:	Polyclonal
Conjugate:	This NEURL1B antibody is un-conjugated
Application:	Western Blotting (WB)

Product Details

Immunogen:	The immunogen is a synthetic peptide directed towards the C-terminal region of Human NEURL1B
Sequence:	GQLRLLGTLQ SSPATTTSPG SLSGSQDDSD SDMTFSVNQS SSASESSLVT
Predicted Reactivity:	Cow: 93%, Dog: 100%, Guinea Pig: 93%, Human: 100%, Mouse: 92%, Rabbit: 93%, Rat: 93%
Characteristics:	This is a rabbit polyclonal antibody against NEURL1B. It was validated on Western Blot.
Purification:	Affinity Purified

Target Details

Target:	NEURL1B
Alternative Name:	NEURL1B (NEURL1B Products)

Target Details

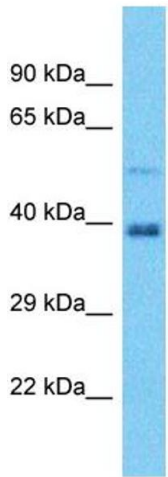
Background:	NEURL1B is an E3 ubiquitin-protein ligase involved in regulation of the Notch pathway through influencing the stability and activity of several Notch ligands. Protein Interaction Partner: Dll4, Dll1, Protein Size: 373
Molecular Weight:	41 kDa
Gene ID:	54492
Pathways:	Notch Signaling

Application Details

Restrictions:	For Research Use only
---------------	-----------------------

Handling

Format:	Liquid
Concentration:	1 mg/mL
Buffer:	Liquid. Purified antibody supplied in 1x PBS buffer with 0.09 % (w/v) sodium azide and 2 % sucrose.
Preservative:	Sodium azide
Precaution of Use:	This product contains Sodium azide: a POISONOUS AND HAZARDOUS SUBSTANCE which should be handled by trained staff only.
Handling Advice:	Avoid repeat freeze-thaw cycles.
Storage:	-20 °C
Storage Comment:	For short term use, store at 2-8°C up to 1 week. For long term storage, store at -20°C in small aliquots to prevent freeze-thaw cycles.



Host: Rabbit
Target Name: NEURL1B
Sample Tissue: MCF7 Cell Lysate
Antibody Dilution: 1.0µg/ml

Western Blotting

Image 1. Host: Rabbit Target Name: NEURL1B Sample
Tissue: Human MCF7 Whole Cell Antibody Dilution: 1ug/ml