

Datasheet for ABIN2774602
anti-CDC20 antibody (N-Term)[Go to Product page](#)

2 Images

Overview

Quantity:	100 µL
Target:	CDC20
Binding Specificity:	N-Term
Reactivity:	Human, Mouse, Rat, Pig, Dog, Horse, Cow
Host:	Rabbit
Clonality:	Polyclonal
Conjugate:	This CDC20 antibody is un-conjugated
Application:	Western Blotting (WB), Immunohistochemistry (IHC)

Product Details

Immunogen:	The immunogen is a synthetic peptide directed towards the N terminal region of human CDC20
Sequence:	MAQFAFESDL HSLQLDAPI PNAPPARWQR KAKEAAGPAP SPMRAANRSH
Predicted Reactivity:	Cow: 100%, Dog: 91%, Horse: 100%, Human: 100%, Mouse: 100%, Pig: 100%, Rat: 100%
Characteristics:	This is a rabbit polyclonal antibody against CDC20. It was validated on Western Blot using a cell lysate as a positive control.
Purification:	Affinity Purified

Target Details

Target:	CDC20
Alternative Name:	CDC20 (CDC20 Products)

Target Details

Background:	<p>CDC20 appears to act as a regulatory protein interacting with several other proteins at multiple points in the cell cycle. It is required for two microtubule-dependent processes, nuclear movement prior to anaphase and chromosome separation.CDC20 appears to act as a regulatory protein interacting with several other proteins at multiple points in the cell cycle. It is required for two microtubule-dependent processes, nuclear movement prior to anaphase and chromosome separation. Publication Note: This RefSeq record includes a subset of the publications that are available for this gene. Please see the Entrez Gene record to access additional publications.</p> <p>Alias Symbols: CDC20A, MGC102824, bA276H19.3, p55CDC</p> <p>Protein Interaction Partner: ANAPC2, FBXO43, CHFR, PTTG1, UBC, CDC27, CCNB1, CCNA2, BUB1B, UBE2S, BUB1, CDC26, TUBB, RAVR1, ANAPC16, TUBA1C, EIF2A, TUBB4B, FRY, RPL23, BUB3, CDC16, CDC23, CILP, TUBA1A, UBB, TUBB2A, TUBA4A, CCT3, TCP1, RPS3, MAD2L1, PBRM1, CPVL, ANAPC7, ANAPC4, CCT5,</p> <p>Protein Size: 499</p>
Molecular Weight:	55 kDa
Gene ID:	991
NCBI Accession:	NM_001255 , NP_001246
UniProt:	Q12834

Application Details

Application Notes:	Optimal working dilutions should be determined experimentally by the investigator.
Comment:	Antigen size: 499 AA
Restrictions:	For Research Use only

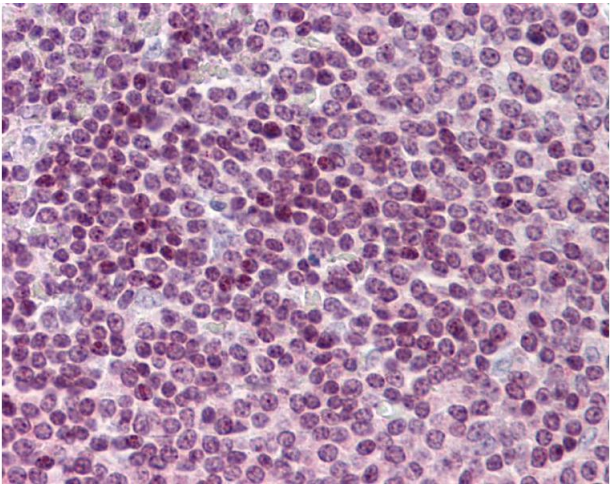
Handling

Format:	Liquid
Concentration:	Lot specific
Buffer:	Liquid. Purified antibody supplied in 1x PBS buffer with 0.09 % (w/v) sodium azide and 2 % sucrose.
Preservative:	Sodium azide
Precaution of Use:	This product contains Sodium azide: a POISONOUS AND HAZARDOUS SUBSTANCE which

Handling

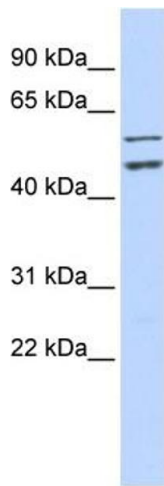
	should be handled by trained staff only.
Handling Advice:	Avoid repeated freeze-thaw cycles.
Storage:	-20 °C
Storage Comment:	For short term use, store at 2-8°C up to 1 week. For long term storage, store at -20°C in small aliquots to prevent freeze-thaw cycles.

Validation report #100039 for Immunocytochemistry (ICC)



Immunohistochemistry

Image 1.



Western Blotting

Image 2. WB Suggested Anti-CDC20 Antibody Titration: 0.2-1 ug/ml ELISA Titer: 1:62500 Positive Control: HeLa cell lysate CDC20 is supported by BioGPS gene expression data to be expressed in HeLa