

Datasheet for ABIN2774610
anti-CHRNA antibody (N-Term)[Go to Product page](#)

1 Image

Overview

Quantity:	100 µL
Target:	CHRNA
Binding Specificity:	N-Term
Reactivity:	Human, Rat, Mouse, Cow, Dog, Rabbit, Guinea Pig
Host:	Rabbit
Clonality:	Polyclonal
Conjugate:	This CHRNA antibody is un-conjugated
Application:	Western Blotting (WB)

Product Details

Immunogen:	The immunogen is a synthetic peptide directed towards the N terminal region of human CHRNA
Sequence:	NYDPNLRPAE RDSVVNVSL KLTLTNLISL NEREEALTTN VWIEMQWCDY
Predicted Reactivity:	Cow: 92%, Dog: 100%, Guinea Pig: 92%, Human: 100%, Mouse: 85%, Rabbit: 100%, Rat: 85%
Characteristics:	This is a rabbit polyclonal antibody against CHRNA. It was validated on Western Blot using a cell lysate as a positive control.
Purification:	Affinity Purified

Target Details

Target:	CHRNA
---------	-------

Target Details

Alternative Name: CHRNG ([CHRNG Products](#))

Background: For background information on the acetylcholine receptor (AChR), see CHRNA1. Two forms of AChR are found in mammalian skeletal muscle cells. The mature form is predominant in innervated adult muscle and the embryonic form is present in fetal and denervated muscle. Embryonic and mature AChR differ by the replacement of the gamma subunit in the pentameric glycoprotein complex by its isoform, the epsilon subunit, which is specific to the mature AChR subtype. This switch is mediated by ARIA (acetylcholine receptor-inducing activity). For background information on the acetylcholine receptor (AChR), see CHRNA1 (MIM 100690). Two forms of AChR are found in mammalian skeletal muscle cells. The mature form is predominant in innervated adult muscle and the embryonic form is present in fetal and denervated muscle. Embryonic and mature AChR differ by the replacement of the gamma subunit in the pentameric glycoprotein complex by its isoform, the epsilon subunit (MIM 100725), which is specific to the mature AChR subtype. This switch is mediated by ARIA (acetylcholine receptor-inducing activity, MIM 142445). [supplied by OMIM].

PRIMARYREFSEQ_SPAN PRIMARY_IDENTIFIER PRIMARY_SPAN COMP 1-2187 AK125362.1 1-2187

Alias Symbols: ACHRG, MGC133376

Protein Interaction Partner: NOTCH2NL, KRTAP10-3, KRTAP10-8, KRTAP10-9, KRTAP10-7, KRT31, CHRNA1,

Protein Size: 517

Molecular Weight: 56 kDa

Gene ID: 1146

NCBI Accession: [NM_005199](#), [NP_005190](#)

UniProt: [P07510](#)

Application Details

Application Notes: Optimal working dilutions should be determined experimentally by the investigator.

Comment: Antigen size: 517 AA

Restrictions: For Research Use only

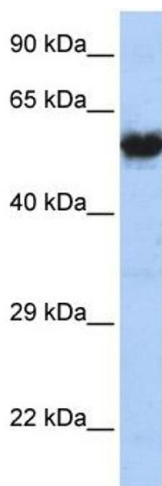
Handling

Format: Liquid

Handling

Concentration:	Lot specific
Buffer:	Liquid. Purified antibody supplied in 1x PBS buffer with 0.09 % (w/v) sodium azide and 2 % sucrose.
Preservative:	Sodium azide
Precaution of Use:	This product contains Sodium azide: a POISONOUS AND HAZARDOUS SUBSTANCE which should be handled by trained staff only.
Handling Advice:	Avoid repeated freeze-thaw cycles.
Storage:	-20 °C
Storage Comment:	For short term use, store at 2-8°C up to 1 week. For long term storage, store at -20°C in small aliquots to prevent freeze-thaw cycles.

Images



Western Blotting

Image 1. WB Suggested Anti-CHRNA Antibody Titration: 1 ug/ml Positive Control: MCF7 Whole Cell