

Datasheet for ABIN2774619
anti-Klotho antibody (N-Term)



[Go to Product page](#)

3 Images

Overview

Quantity:	100 µL
Target:	Klotho (KL)
Binding Specificity:	N-Term
Reactivity:	Human
Host:	Rabbit
Clonality:	Polyclonal
Conjugate:	This Klotho antibody is un-conjugated
Application:	Western Blotting (WB)

Product Details

Immunogen:	The immunogen is a synthetic peptide directed towards the n terminal region of human KL
Sequence:	FPDGFLWAVG SAAYQTEGGW QQHGKGASIW DTFTHHPLAP PGDSRNASLP
Predicted Reactivity:	Human: 100%
Characteristics:	This is a rabbit polyclonal antibody against KL. It was validated on Western Blot using a cell lysate as a positive control.
Purification:	Affinity Purified

Target Details

Target:	Klotho (KL)
Alternative Name:	KL (KL Products)

Target Details

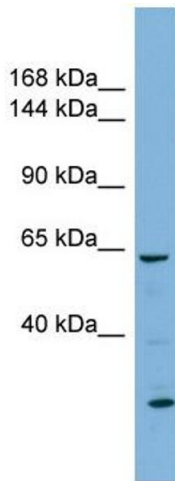
Background:	<p>This gene encodes a type-I membrane protein that is related to beta-glucosidases. Reduced production of this protein has been observed in patients with chronic renal failure (CRF), and this may be one of the factors underlying the degenerative processes (</p> <p>Alias Symbols: -</p> <p>Protein Interaction Partner: IGF1R,</p> <p>Protein Size: 549</p>
Molecular Weight:	60 kDa
Gene ID:	9365
NCBI Accession:	NM_033549
Pathways:	Fc-epsilon Receptor Signaling Pathway , EGFR Signaling Pathway , Neurotrophin Signaling Pathway , Hormone Activity , Growth Factor Binding

Application Details

Application Notes:	Optimal working dilutions should be determined experimentally by the investigator.
Comment:	Antigen size: 549 AA
Restrictions:	For Research Use only

Handling

Format:	Liquid
Concentration:	Lot specific
Buffer:	Liquid. Purified antibody supplied in 1x PBS buffer with 0.09 % (w/v) sodium azide and 2 % sucrose.
Preservative:	Sodium azide
Precaution of Use:	This product contains Sodium azide: a POISONOUS AND HAZARDOUS SUBSTANCE which should be handled by trained staff only.
Handling Advice:	Avoid repeated freeze-thaw cycles.
Storage:	-20 °C
Storage Comment:	For short term use, store at 2-8°C up to 1 week. For long term storage, store at -20°C in small aliquots to prevent freeze-thaw cycles.



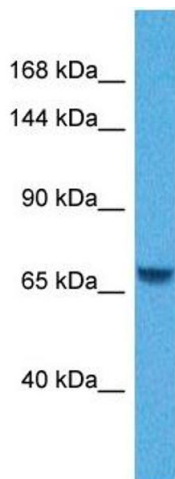
Western Blotting

Image 1. WB Suggested Anti-KL Antibody Titration: 0.2-1 ug/ml ELISA Titer: 1:312500 Positive Control: Human Thymus



Western Blotting

Image 2. Host: Rabbit Target Name: KL Sample Tissue: Human Jurkat Whole Cell Antibody Dilution: 1ug/ml



Western Blotting

Image 3. Host: Rabbit Target Name: KL Sample Tissue: Human Jurkat Whole Cell Antibody Dilution: 1ug/ml