

Datasheet for ABIN2774656  
**anti-SREBF2 antibody (Middle Region)**[Go to Product page](#)

## 2 Images

## Overview

Quantity:	100 µL
Target:	SREBF2
Binding Specificity:	Middle Region
Reactivity:	Human, Rat, Dog, Cow, Guinea Pig, Horse
Host:	Rabbit
Clonality:	Polyclonal
Conjugate:	This SREBF2 antibody is un-conjugated
Application:	Western Blotting (WB), Immunohistochemistry (IHC)

## Product Details

Immunogen:	The immunogen is a synthetic peptide directed towards the middle region of human SREBF2
Sequence:	VMMGQEKVPI KQVPGGVKQL EPPKEGERRT THNIEKRYR SSINDKIIEI
Cross-Reactivity:	Dog (Canine), Chicken, Human, Mouse (Murine), Pig (Porcine), Rabbit, Rat (Rattus)
Predicted Reactivity:	Cow: 100%, Dog: 100%, Guinea Pig: 100%, Horse: 100%, Human: 100%, Rat: 100%
Characteristics:	This is a rabbit polyclonal antibody against SREBF2. It was validated on Western Blot using a cell lysate as a positive control.
Purification:	Affinity Purified

## Target Details

Target:	SREBF2
---------	--------

## Target Details

Alternative Name:	SREBF2 / SREBP2 ( <a href="#">SREBF2 Products</a> )
Background:	<p>SREBF2 encodes a ubiquitously expressed transcription factor that controls cholesterol homeostasis by stimulating transcription of sterol-regulated genes. The encoded protein contains a basic helix-loop-helix-leucine zipper (bHLH-Zip) domain.</p> <p>Alias Symbols: SREBP2, bHLHd2</p> <p>Protein Interaction Partner: UBC, ERLIN2, MRPS6, NAE1, MAPK3, MAPK1, PARK7, SCAP, SREBF2, SREBF1, NPAT, HINFP, TRRAP, SUMO2, RNF139, SMAD3, HNF4A, ATF6, KLF13, LZTR1, ABLIM2, ATF7IP, ZDHHC17, COPS5, OS9, PIAS3, CASP8AP2, ARHGEF1, PIAS2, SLC4A4, PIAS1, ZYX, ZMYM2, UBE2I, TTC1, SPTBN1,</p> <p>Protein Size: 681</p>
Molecular Weight:	74 kDa
Gene ID:	6721
NCBI Accession:	<a href="#">NM_004599</a>
UniProt:	<a href="#">Q12772</a>
Pathways:	<a href="#">Regulation of Lipid Metabolism by PPARalpha</a>

## Application Details

Application Notes:	<p>WB Suggested Anti-SREBF2 Antibody Titration: 0.2-1 µg/mL</p> <p>ELISA Titer: 1:7812500</p> <p>Positive Control: Transfected 293T.</p> <p>Optimal working dilutions should be determined experimentally by the investigator.</p>
Comment:	Antigen size: 681 AA
Restrictions:	For Research Use only

## Handling

Format:	Liquid
Concentration:	Lot specific
Buffer:	Liquid. Purified antibody supplied in 1x PBS buffer with 0.09 % (w/v) sodium azide and 2 % sucrose.
Preservative:	Sodium azide
Precaution of Use:	This product contains Sodium azide: a POISONOUS AND HAZARDOUS SUBSTANCE which

## Handling

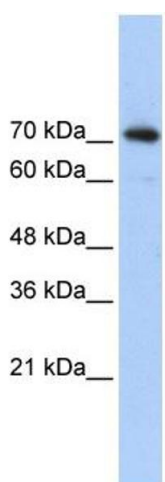
should be handled by trained staff only.

Handling Advice: Avoid repeated freeze-thaw cycles.

Storage: -20 °C

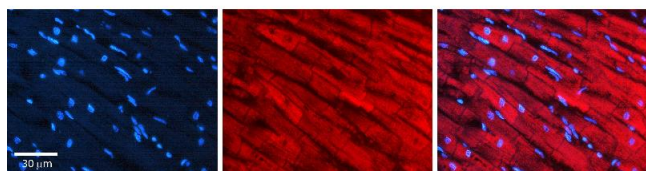
Storage Comment: For short term use, store at 2-8°C up to 1 week. For long term storage, store at -20°C in small aliquots to prevent freeze-thaw cycles.

## Images



### Western Blotting

**Image 1.** WB Suggested Anti-SREBF2 Antibody Titration: 0.2-1 ug/ml ELISA Titer: 1:7812500 Positive Control: Transfected 293T SREBF2 is supported by BioGPS gene expression data to be expressed in HEK293T



### Immunohistochemistry

**Image 2.** Rabbit Anti-SREBF2 Antibody Formalin Fixed Paraffin Embedded Tissue: Human heart Tissue Observed Staining: Cytoplasmic in golgi Primary Antibody Concentration: 1:100 Other Working Concentrations: 1:600 Secondary Antibody: Donkey anti-Rabbit-Cy3 Secondary Antibody Concentration: 1:200 Magnification: 20X Exposure Time: 0.5 - 2.0 sec