

Datasheet for ABIN2774659
anti-TCF12 antibody (N-Term)



[Go to Product page](#)

3 Images

Overview

Quantity:	100 µL
Target:	TCF12
Binding Specificity:	N-Term
Reactivity:	Human, Mouse, Cow, Pig, Zebrafish (Danio rerio)
Host:	Rabbit
Clonality:	Polyclonal
Conjugate:	This TCF12 antibody is un-conjugated
Application:	Western Blotting (WB)

Product Details

Immunogen:	The immunogen is a synthetic peptide directed towards the N terminal region of human TCF12
Sequence:	QQQRMAAIGT DKELSDLLDF SAMFSPPVNS GKTRPTTLGS SQFSGSGIDE
Cross-Reactivity:	Cow (Bovine), Chicken, Human, Mouse (Murine), Rat (Rattus)
Predicted Reactivity:	Cow: 100%, Human: 100%, Mouse: 100%, Pig: 100%, Zebrafish: 92%
Characteristics:	This is a rabbit polyclonal antibody against TCF12. It was validated on Western Blot using a cell lysate as a positive control.
Purification:	Affinity Purified

Target Details

Target:	TCF12
---------	-------

Target Details

Alternative Name:	TCF12 (TCF12 Products)
Background:	<p>TCF12 encodes a protein that is a member of the basic helix-loop-helix (bHLH) E-protein family which recognizes the consensus binding site (E-box) CANNTG. This encoded protein is expressed in many tissues, among them skeletal muscle, thymus, B- and T-cells, and may participate in regulating lineage-specific gene expression through the formation of heterodimers with other bHLH E-proteins. The protein encoded by this gene is a member of the basic helix-loop-helix (bHLH) E-protein family that recognizes the consensus binding site (E-box) CANNTG. This encoded protein is expressed in many tissues, among them skeletal muscle, thymus, B- and T-cells, and may participate in regulating lineage-specific gene expression through the formation of heterodimers with other bHLH E-proteins. Several alternatively spliced transcript variants of this gene have been described, but the full-length nature of some of these variants has not been determined.</p> <p>Alias Symbols: HEB, HTF4, HsT17266, bHLHb20</p> <p>Protein Interaction Partner: TSNAX, STAT5A, SRI, RNASEL, QARS, PSMA1, MLLT6, ID3, CDKN2C, TRIM72, LYSMD1, C6orf165, HEXIM2, ASCL4, MORN4, TWIST2, C16orf45, HOPX, NAGK, C1orf109, SPG21, VPS28, NEUROG3, OSGIN1, CRCP, EDRF1, ARMC8, MAPKBP1, STK16, DGCR6, UBC, TCF21, SOX2, ID2, BMF, MYC,</p> <p>Protein Size: 706</p>
Molecular Weight:	73 kDa
Gene ID:	6938
NCBI Accession:	NM_207036 , NP_996919
UniProt:	Q99081
Pathways:	SARS-CoV-2 Protein Interactome

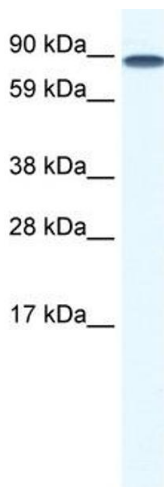
Application Details

Application Notes:	<p>WB Suggested Anti-TCF12 Antibody Titration: 0.06 µg/mL</p> <p>ELISA Titer: 1:1562500</p> <p>Positive Control: Human Lung.</p> <p>Optimal working dilutions should be determined experimentally by the investigator.</p>
Comment:	Antigen size: 706 AA
Restrictions:	For Research Use only

Handling

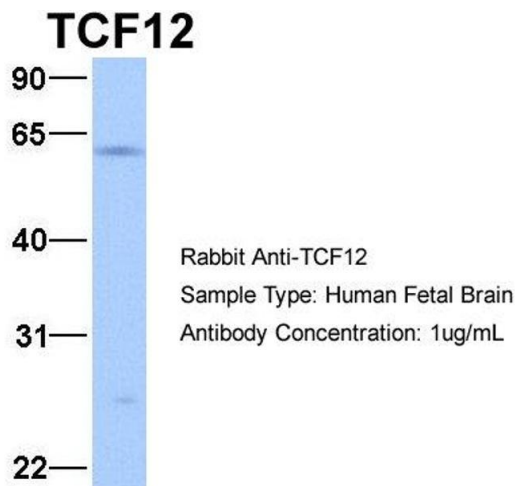
Format:	Liquid
Concentration:	Lot specific
Buffer:	Liquid. Purified antibody supplied in 1x PBS buffer with 0.09 % (w/v) sodium azide and 2 % sucrose.
Preservative:	Sodium azide
Precaution of Use:	This product contains Sodium azide: a POISONOUS AND HAZARDOUS SUBSTANCE which should be handled by trained staff only.
Handling Advice:	Avoid repeated freeze-thaw cycles.
Storage:	-20 °C
Storage Comment:	For short term use, store at 2-8°C up to 1 week. For long term storage, store at -20°C in small aliquots to prevent freeze-thaw cycles.

Images



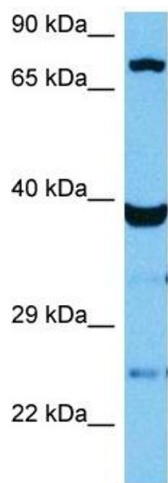
Western Blotting

Image 1. WB Suggested Anti-TCF12 Antibody Titration: 0.06ug/ml ELISA Titer: 1:1562500 Positive Control: Human Lung



Western Blotting

Image 2. Host: Rabbit Target Name: TCF12 Sample Type: Human Fetal Brain Antibody Dilution: 1.0ug/ml



Western Blotting

Image 3. Host: Mouse Target Name: TCF12 Sample Tissue: Mouse Skeletal Muscle Antibody Dilution: 1ug/ml