

Datasheet for ABIN2774664  
**anti-SRF antibody (N-Term)**

## 3 Images

[Go to Product page](#)

## Overview

Quantity:	100 µL
Target:	SRF
Binding Specificity:	N-Term
Reactivity:	Human, Mouse, Rat, Dog, Pig, Cow, Rabbit, Zebrafish (Danio rerio)
Host:	Rabbit
Clonality:	Polyclonal
Conjugate:	This SRF antibody is un-conjugated
Application:	Western Blotting (WB), Chromatin Immunoprecipitation (ChIP)

## Product Details

Immunogen:	The immunogen is a synthetic peptide directed towards the N terminal region of human SRF
Sequence:	ATGGYGVPVSG AVSGAKPGKK TRGRVKIKME FIDNKLRRYT TFSKRKTGIM
Cross-Reactivity:	Cow (Bovine), Dog (Canine), Chicken, Human, Mouse (Murine), Rat (Rattus)
Predicted Reactivity:	Cow: 100%, Dog: 100%, Human: 100%, Mouse: 100%, Pig: 100%, Rabbit: 100%, Rat: 100%, Zebrafish: 100%
Characteristics:	This is a rabbit polyclonal antibody against SRF. It was validated on Western Blot using a cell lysate as a positive control.
Purification:	Protein A purified

## Target Details

Target:	SRF
Abstract:	<a href="#">SRF Products</a>
Background:	<p>SRF is a ubiquitous nuclear protein that stimulates both cell proliferation and differentiation. It is a member of the MADS (MCM1, Agamous, Deficiens, and SRF) box superfamily of transcription factors. This protein binds to the serum response element (SRE) in the promoter region of target genes. This protein regulates the activity of many immediate-early genes, for example c-fos, and thereby participates in cell cycle regulation, apoptosis, cell growth, and cell differentiation. This gene is the downstream target of many pathways, for example, the mitogen-activated protein kinase pathway (MAPK) that acts through the ternary complex factors (TCFs).</p> <p>Alias Symbols: MCM1</p> <p>Protein Interaction Partner: Camk2d, ZIC3, ELK1, SRFBP1, SRF, NFKB1, PRKDC, CIRBP, ALDH3A1, SUMO1, UBE2I, SHBG, TRIM63, KDM6A, MYOCD, MKL1, CNTN2, CSNK2A1, SMARCA4, PELP1, KAT5, HDAC4, EPC1, SMAD7, HDAC3, MKL2, ATF6, BARX2, MAPKAPK2, FHL3, GATA4, CAMK2A, HOPX, PYCARD, NKX2-3, MINPP1,</p> <p>Protein Size: 508</p>
Molecular Weight:	52 kDa
Gene ID:	6722
NCBI Accession:	<a href="#">NM_003131</a> , <a href="#">NP_003122</a>
UniProt:	<a href="#">P11831</a>

## Application Details

Application Notes:	<p>WB Suggested Anti-SRF Antibody Titration: 1.25 µg/mL</p> <p>ELISA Titer: 1:1562500</p> <p>Positive Control: Jurkat cell lysate.</p> <p>Optimal working dilutions should be determined experimentally by the investigator.</p>
Comment:	Antigen size: 508 AA
Restrictions:	For Research Use only

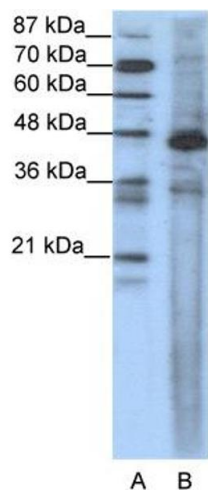
## Handling

Format:	Liquid
Concentration:	Lot specific

Handling

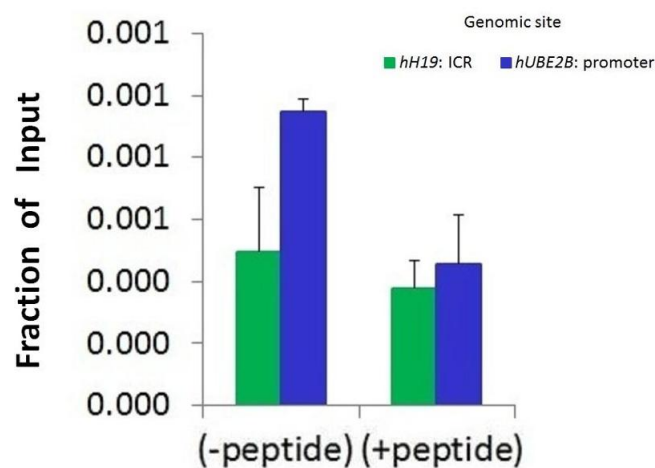
Buffer:	Liquid. Purified antibody supplied in 1x PBS buffer with 0.09 % (w/v) sodium azide and 2 % sucrose.
Preservative:	Sodium azide
Precaution of Use:	This product contains Sodium azide: a POISONOUS AND HAZARDOUS SUBSTANCE which should be handled by trained staff only.
Handling Advice:	Avoid repeated freeze-thaw cycles.
Storage:	-20 °C
Storage Comment:	For short term use, store at 2-8°C up to 1 week. For long term storage, store at -20°C in small aliquots to prevent freeze-thaw cycles.

Images



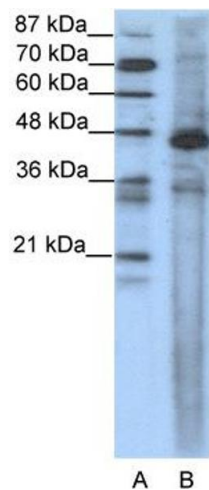
**Western Blotting**

**Image 1.** WB Suggested Anti-SRF Antibody Titration: 1.25ug/ml ELISA Titer: 1:1562500 Positive Control: Jurkat cell lysate SRF is supported by BioGPS gene expression data to be expressed in Jurkat



**Chromatin Immunoprecipitation**

**Image 2.** Chromatin Immunoprecipitation (ChIP) Using SRF antibody - N-terminal region and HCT116 Cells



### Western Blotting

**Image 3.** WB Suggested Anti-SRF

Antibody Titration: 1.25 µg/mL ELISA Titer: 1:1562500

Positive Control: Jurkat cell lysate

SRF is supported by BioGPS gene expression data to be expressed in Jurkat