



[Go to Product page](#)

Datasheet for ABIN2774666
anti-YY1 antibody (Middle Region)

2 Images

Overview

Quantity:	100 µL
Target:	YY1
Binding Specificity:	Middle Region
Reactivity:	Human, Mouse, Rat, Dog, Cow, Zebrafish (Danio rerio)
Host:	Rabbit
Clonality:	Polyclonal
Conjugate:	This YY1 antibody is un-conjugated
Application:	Western Blotting (WB), Immunohistochemistry (IHC)

Product Details

Immunogen:	The immunogen is a synthetic peptide directed towards the middle region of human YY1
Sequence:	KQLAEFARMK PRKIKEDDAP RTIACPHKGC TKMFRDNSAM RKHLHHTGPR
Cross-Reactivity:	Cow (Bovine), Dog (Canine), Chicken, Human, Mouse (Murine), Rat (Rattus)
Predicted Reactivity:	Cow: 100%, Dog: 100%, Human: 100%, Mouse: 100%, Rat: 100%, Zebrafish: 92%
Characteristics:	This is a rabbit polyclonal antibody against YY1. It was validated on Western Blot and immunohistochemistry.
Purification:	Affinity Purified

Target Details

Target:	YY1
---------	-----

Target Details

Alternative Name:	YY1 (YY1 Products)
Background:	<p>YY1 is a ubiquitously distributed transcription factor belonging to the GLI-Kruppel class of zinc finger proteins. The protein is involved in repressing and activating a diverse number of promoters. YY1 may direct histone deacetylases and histone acetyltransferases to a promoter in order to activate or repress the promoter, thus implicating histone modification in the function of YY1.</p> <p>Alias Symbols: DELTA, NF-E1, UCRBP, INO80S, YIN-YANG-1</p> <p>Protein Interaction Partner: HDAC1, SMURF2, UBC, SHFM1, RNF2, BMI1, SUZ12, RYBP, GABPB1, GABPA, PCGF2, RING1, EP300, LAMC2, SPRY1, SLC39A7, NR1H2, TESK1, RAF1, NFKB1, GRN, CRKL, ARRB1, SP1, WDHD1, ZNF24, NHP2L1, NCL, ZNF830, APP, ZNF638, EED, SMAD3, SMAD2, EZH2, SUMO1, SUMO3, INO80E,</p> <p>Protein Size: 414</p>
Molecular Weight:	45 kDa
Gene ID:	7528
NCBI Accession:	NM_003403 , NP_003394
UniProt:	P25490

Application Details

Application Notes:	<p>WB Suggested Anti-YY1 Antibody Titration: 0.2-1 µg/mL</p> <p>Positive Control: Human Thymus.</p> <p>Optimal working dilutions should be determined experimentally by the investigator.</p>
Comment:	Antigen size: 414 AA
Restrictions:	For Research Use only

Handling

Format:	Liquid
Concentration:	Lot specific
Buffer:	Liquid. Purified antibody supplied in 1x PBS buffer with 0.09 % (w/v) sodium azide and 2 % sucrose.
Preservative:	Sodium azide
Precaution of Use:	This product contains Sodium azide: a POISONOUS AND HAZARDOUS SUBSTANCE which

Handling

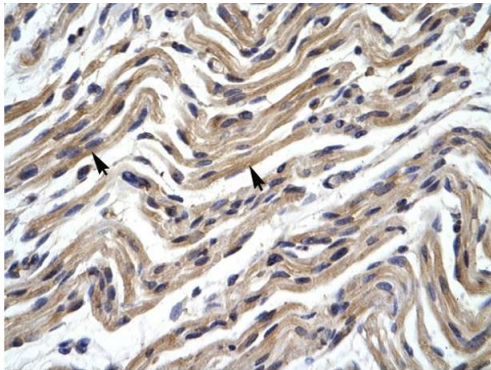
should be handled by trained staff only.

Handling Advice: Avoid repeated freeze-thaw cycles.

Storage: -20 °C

Storage Comment: For short term use, store at 2-8°C up to 1 week. For long term storage, store at -20°C in small aliquots to prevent freeze-thaw cycles.

Images



Rabbit Anti-YY1 Antibody
Catalog Number: P100898
Lot Number: QC0898
Paraffin Embedded Tissue: Human Muscle
Cells with Positive label: Skeletal muscle cells (Indicated with Arrows)
Antibody Concentration: 4.0-8.0 µg/ml
Magnification: 400X

Immunohistochemistry

Image 1. Human Muscle



Western Blotting

Image 2. WB Suggested Anti-YY1 Antibody Titration: 0.2-1 µg/ml Positive Control: Human Thymus