

Datasheet for ABIN2774667  
**anti-GABPB2 antibody (C-Term)**[Go to Product page](#)

## 4 Images

## Overview

Quantity:	100 µL
Target:	GABPB2
Binding Specificity:	C-Term
Reactivity:	Human
Host:	Rabbit
Clonality:	Polyclonal
Conjugate:	This GABPB2 antibody is un-conjugated
Application:	Western Blotting (WB), Immunohistochemistry (IHC)

## Product Details

Immunogen:	The immunogen is a synthetic peptide directed towards the C terminal region of human GABPB2
Sequence:	PDGQQVLTPV ATDIAETVI SEEPPAKRQC IEIENRVES AEIEEREALQ
Cross-Reactivity:	Cow (Bovine), Dog (Canine), Chicken, Human, Mouse (Murine), Rat (Rattus)
Predicted Reactivity:	Chicken: 92%
Characteristics:	This is a rabbit polyclonal antibody against GABPB2. It was validated on Western Blot and immunohistochemistry.
Purification:	Affinity Purified

## Target Details

Target:	GABPB2
Alternative Name:	GABPB2 ( <a href="#">GABPB2 Products</a> )
Background:	<p>GABPB2 is the GA-binding protein transcription factor, beta subunit. It forms a tetrameric complex with the alpha subunit, and stimulates transcription of target genes. The encoded protein may be involved in activation of cytochrome oxidase expression and nuclear control of mitochondrial function. The crystal structure of a similar protein in mouse has been resolved as a ternary protein complex.</p> <p>Alias Symbols: E4TF1, GABPB, BABPB2, E4TF1B, GABPB2, NRF2B1, NRF2B2, E4TF1-47, E4TF1-53</p> <p>Protein Interaction Partner: FAM90A1, RBM11, RSPH14, TDRD7, POGZ, LMO4, TRAF2, SNRPB2, SNRPA, LMO1, UBC, MAGEB18, RYBP, YAF2, YY1, GABPA, IL16, DHX16, CIC, LMO3, USO1, FANCG, BAI2, HCFC1, ATF1,</p> <p>Protein Size: 395</p>
Molecular Weight:	42 kDa
Gene ID:	2553
NCBI Accession:	<a href="#">NM_005254</a> , <a href="#">NP_005245</a>
UniProt:	<a href="#">Q06547</a>

## Application Details

Application Notes:	<p>WB Suggested Anti-GABPB2 Antibody Titration: 0.2-1 µg/mL</p> <p>ELISA Titer: 1:62500</p> <p>Positive Control: HepG2 cell lysate.</p> <p>Optimal working dilutions should be determined experimentally by the investigator.</p>
Comment:	Antigen size: 395 AA
Restrictions:	For Research Use only

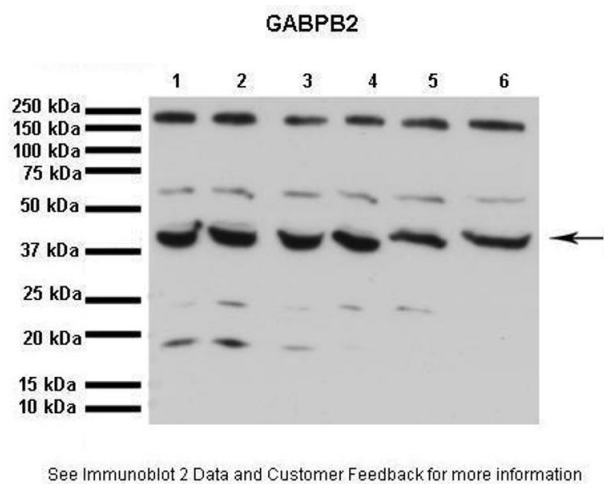
## Handling

Format:	Liquid
Concentration:	Lot specific
Buffer:	Liquid. Purified antibody supplied in 1x PBS buffer with 0.09 % (w/v) sodium azide and 2 % sucrose.

Handling

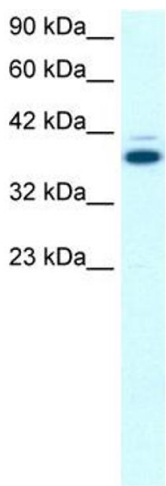
Preservative:	Sodium azide
Precaution of Use:	This product contains Sodium azide: a POISONOUS AND HAZARDOUS SUBSTANCE which should be handled by trained staff only.
Handling Advice:	Avoid repeated freeze-thaw cycles.
Storage:	-20 °C
Storage Comment:	For short term use, store at 2-8°C up to 1 week. For long term storage, store at -20°C in small aliquots to prevent freeze-thaw cycles.

Images



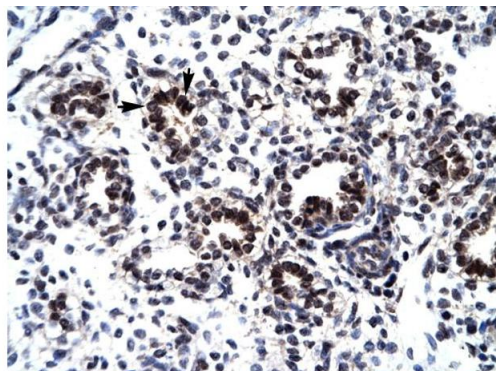
Western Blotting

**Image 1.** Lanes: 1. 40 ug human HK2 cell (kidney proximal tubular cell line) lysate 2. 40 ug H2O2 treated human HK2 Cell lysate 3. 40 ug H2O2 treated human HK2 Cell lysate 4. 40 ug H2O2 treated human HK2 Cell lysate 5. 40 ug H2O2 treated human HK2 Cell lysate 6. 40 ug H2O2 treated human HK2 Cell lysate Primary Antibody Dilution: 1:1000 Secondary Antibody: Goat anti-Rabbit HRP Secondary Antibody Dilution: 1:2000 Gene Name: GABPB2 Submitted by: The University of Queensland, School of Medicine, Centre for Kidney Disease Research



Western Blotting

**Image 2.** WB Suggested Anti-GABPB2 Antibody Titration: 0.2-1 ug/ml ELISA Titer: 1:62500 Positive Control: HepG2 cell lysate GABPB1 is supported by BioGPS gene expression data to be expressed in HepG2



Rabbit Anti-GABPB2 Antibody  
Catalog Number: P100925  
Lot Number: QC0925  
Paraffin Embedded Tissue: Human Lung  
Cells with Positive label: Alveolar cells (Indicated with Arrows)  
Antibody Concentration: 4.0-8.0 µg/ml  
Magnification: 400X

### Immunohistochemistry

#### Image 3. Human Lung

Please check the [product details page](#) for more images. Overall 4 images are available for ABIN2774667.