

Datasheet for ABIN2774670
anti-NFATC1 antibody (N-Term)

2 Images



[Go to Product page](#)

Overview

Quantity:	100 µL
Target:	NFATC1
Binding Specificity:	N-Term
Reactivity:	Human, Mouse, Guinea Pig, Dog
Host:	Rabbit
Clonality:	Polyclonal
Conjugate:	This NFATC1 antibody is un-conjugated
Application:	Western Blotting (WB), Immunohistochemistry (IHC)

Product Details

Immunogen:	The immunogen is a synthetic peptide directed towards the N terminal region of human NFATC1
Sequence:	MPSTSFPVPS KFPLGPAAAV FGRGETLGPA PRAGGTMKSA EEEHYGYASS
Cross-Reactivity:	Dog (Canine), Human, Mouse (Murine), Rat (Rattus)
Predicted Reactivity:	Dog: 91%, Guinea Pig: 84%, Human: 100%, Mouse: 91%
Characteristics:	This is a rabbit polyclonal antibody against NFATC1. It was validated on Western Blot using a cell lysate as a positive control.
Purification:	Affinity Purified

Target Details

Target:	NFATC1
Alternative Name:	NFAT2 / NFATC (NFATC1 Products)
Background:	<p>NFATC1 is a component of the nuclear factor of activated T cells DNA-binding transcription complex. This complex consists of at least two components: a preexisting cytosolic component that translocates to the nucleus upon T cell receptor (TCR) stimulation, and an inducible nuclear component. Proteins belonging to this family of transcription factors play a central role in inducible gene transcription during immune response. The product of this gene is an inducible nuclear component. It functions as a major molecular target for the immunosuppressive drugs such as cyclosporin A. Different isoforms of this protein may regulate inducible expression of different cytokine genes. The product of this gene is a component of the nuclear factor of activated T cells DNA-binding transcription complex. This complex consists of at least two components: a preexisting cytosolic component that translocates to the nucleus upon T cell receptor (TCR) stimulation, and an inducible nuclear component. Proteins belonging to this family of transcription factors play a central role in inducible gene transcription during immune response. The product of this gene is an inducible nuclear component. It functions as a major molecular target for the immunosuppressive drugs such as cyclosporin A. Five transcript variants encoding distinct isoforms have been identified for this gene. Different isoforms of this protein may regulate inducible expression of different cytokine genes.</p> <p>Alias Symbols: MGC138448, NF-ATC, NFAT2, NFATc</p> <p>Protein Interaction Partner: YWHAQ, OGT, PML, GZF1, FOXP3, HDAC4, PIAS1, SUMO1, UBE2I, RPS6KB1, RPS6KA3, HDAC2, HDAC1, HNRNPA1, TUBA1A, KPNB1, HDAC5, KAT2B, EP300, PARP1, HDAC3, PPP3R1, MAPK14, GNB2L1, PRKCA, SPI1, PIM1, EGR2, EGR1,</p> <p>Protein Size: 716</p>
Molecular Weight:	78 kDa
Gene ID:	4772
NCBI Accession:	NM_172390 , NP_765978
Pathways:	RTK Signaling , WNT Signaling , Fc-epsilon Receptor Signaling Pathway

Application Details

Application Notes:	WB Suggested Anti-NFATC1 Antibody Titration: 0.2-1 µg/mL
	ELISA Titer: 1:312500
	Positive Control: Human Stomach.


Application Details

	Optimal working dilutions should be determined experimentally by the investigator.
Comment:	Antigen size: 716 AA
Restrictions:	For Research Use only

Handling

Format:	Liquid
Concentration:	Lot specific
Buffer:	Liquid. Purified antibody supplied in 1x PBS buffer with 0.09 % (w/v) sodium azide and 2 % sucrose.
Preservative:	Sodium azide
Precaution of Use:	This product contains Sodium azide: a POISONOUS AND HAZARDOUS SUBSTANCE which should be handled by trained staff only.
Handling Advice:	Avoid repeated freeze-thaw cycles.
Storage:	-20 °C
Storage Comment:	For short term use, store at 2-8°C up to 1 week. For long term storage, store at -20°C in small aliquots to prevent freeze-thaw cycles.

Images



90 kDa__
65 kDa__
40 kDa__
31 kDa__
22 kDa__

Rabbit Anti-NFATC1 Antibody
Catalog Number: P100981
Lot Number: QC0981
Lane: Fetal Stomach Lysate

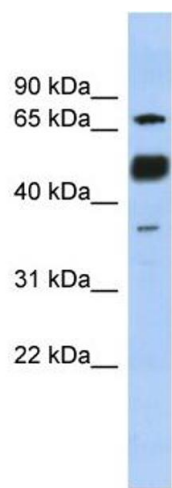
Antibody Titration: 1.0µg/ml
Gel Concentration: 12%

Western Blotting

Image 1. WB Suggested Anti-NFATC1

Antibody Titration: 0.2-1 µg/mL ELISA Titer: 1:12500

Positive Control: Human Stomach



Western Blotting

Image 2. WB Suggested Anti-NFATC1 Antibody Titration:
0.2-1 ug/ml ELISA Titer: 1:312500 Positive Control: Human Stomach